

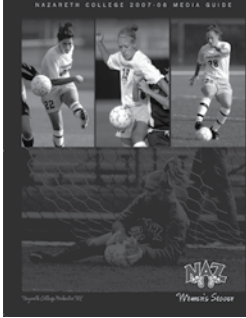


## College Information

Location .....	4245 East Avenue, Rochester, NY 14618
Main Telephone Number .....	(585) 389-2525
Enrollment .....	1,975 (undergraduate)
Founded .....	1924 by the Sisters of St. Joseph
President .....	Daan Braveman
Nickname .....	Golden Flyers
Colors .....	Purple and Gold
Affiliation .....	NCAA Division III
Conference .....	Empire 8
Empire 8 Commissioner .....	Chuck Mitrano
Office Phone .....	(585) 581-0834
E-mail .....	cmitrano@empire8.com
Empire 8 Assistant Commissioner .....	Tim Farrell
E-mail .....	tfarrell@empire8.com
Home Field (capacity) .....	Golden Flyer Stadium (2,200)
Athletic Director .....	Peter Bothner
Office Phone .....	(585) 389-2196
E-mail .....	pbothne4@naz.edu
Women's Soccer Coach .....	Gail Mann (Cortland, '87)
Career Record/Years .....	175-74-23/14
Office Phone .....	(585) 389-2813
E-mail .....	gmann8@naz.edu
Assistant Coaches .....	Billy Stojanovski, Sandy Brody
2007 Captains .....	Shannon Burns, Ashley Clinton
2006 Record .....	9-7-3
Empire 8 Conference Record/Finish .....	3-3-1/4th (won E8 Tournament)
Post-season .....	NCAA Tournament First Round
Players returning/lost .....	17/8
Starters returning/lost .....	7/4
NCAA appearances (7) .....	1997, 1998, 1999, 2000, 2001, 2002, 2006
Head Athletic Trainer .....	Adrienne Jester
Office Phone .....	(585) 389-2838
E-mail .....	ajester4@naz.edu
Assistant Athletic Trainer .....	Mike Fahy
E-mail .....	mfahy8@naz.edu
Assistant Athletic Trainer .....	Beth Abegglen
E-mail .....	babegg16@naz.edu
Assistant Athletic Director for Sports Information .....	Joe Seil
Office Phone .....	(585) 389-2452
Office Fax .....	(585) 389-2188
E-mail .....	jseil2@naz.edu
Web Address .....	www.nazathletics.com
Admissions Office .....	(585) 389-2860
Financial Aid Office .....	(585) 389-2310

## Table of Contents

Nazareth College Athletics/ Women's Soccer Quick Facts .....	Page 1
Staff Directory .....	Page 2
Head Coach Gail Mann .....	Page 3
Year by Year Records .....	Page 3
Assistant Coaches Billy Stojanovski, Sandy Brody .....	Page 4
Golden Flyers in Post-Season Play .....	Page 4
2006 Season in Review, Final Statistics .....	Page 5
2007 Roster .....	Page 6
2007 Season Preview .....	Page 7
2007 Returning Players: .....	Page 8-14
Nazareth vs. Opponents .....	Page 14
2007 Newcomers .....	Page 15
Empire 8 Conference .....	Page 16
Golden Flyers Individual Award Winners .....	Page 17
Golden Flyers Career Scoring Records .....	Page 18
Golden Flyers All-Time Roster .....	Page 19
Golden Flyers All-Time Results .....	Page 20-21
History and Information .....	Page 22





NAZARETH COLLEGE 2007-08 MEDIA GUIDE

NAZARETH WOMEN'S SOCCER  
2007 is a production of the  
Nazareth Athletic Department.  
Special thanks to Kiel Sick. For  
further information, contact Joe  
Seil at (585) 389-2452 or at  
jseil2@naz.edu.

**Front cover:**  
JULIE BIRBILIS  
CAROLINE PARSONS  
CAITY RICHARDSON  
GHOSTED IMAGE:  
SHANNON BURNS

DESIGN & LAYOUT: **Symbolic**

MAIN COLLEGE NUMBER: (585) 389-2525	PRESS BOX PHONE: (585) 389-2951
ATHLETIC OFFICE FAX: (585) 389-2839	PRESS BOX FAX: (585) 389-2950
SPORTS INFO FAX: (585) 389-2188	SPORTS HOTLINE: (585) 389-2095

PHONE **Numbers**



# 2007-08 Nazareth STAFF DIRECTORY



BETH *Abegglen*

ASSISTANT  
ATHLETIC TRAINER  
[babegg16@naz.edu](mailto:babegg16@naz.edu)  
389-2838



SUE *Behme*

WOMEN'S  
LACROSSE COACH  
[sbehme9@naz.edu](mailto:sbehme9@naz.edu)  
389-2835



PETER *Böhner*

DIRECTOR OF ATHLETICS  
[pbothne4@naz.edu](mailto:pbothne4@naz.edu)  
389-2196



TERESE *Bouchard*

EQUESTRIAN COACH  
[tboucha3@naz.edu](mailto:tboucha3@naz.edu)  
389-2195



TOBY *Brown*

ASSOCIATE MEN'S  
BASKETBALL COACH  
[tbrown9@naz.edu](mailto:tbrown9@naz.edu)  
389-2193



JACK *Carpenter*

WOMEN'S  
SOFTBALL COACH  
[jcarpen9@naz.edu](mailto:jcarpen9@naz.edu)  
389-2936



MARTY *Coddington*

MEN'S & WOMEN'S  
GOLF COACH  
[mcoddin6@naz.edu](mailto:mcoddin6@naz.edu)  
389-2851



MIKE *Daley*

ASSISTANT ATHLETIC  
DIRECTOR & MEN'S  
BASKETBALL COACH  
[mdaley8@naz.edu](mailto:mdaley8@naz.edu)  
389-2814



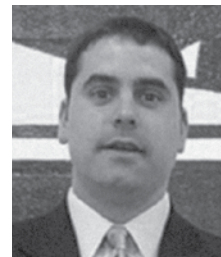
MICHAEL *Fahy*

ASSISTANT  
ATHLETIC TRAINER  
[mfahy8@naz.edu](mailto:mfahy8@naz.edu)  
389-2838



DANNY *Gilbertson*

MEN'S SOCCER COACH  
[dgilber5@naz.edu](mailto:dgilber5@naz.edu)  
389-2191



DEVIN *Gotham*

WOMEN'S  
BASKETBALL COACH  
[dgotham6@naz.edu](mailto:dgotham6@naz.edu)  
389-2190



ADRIENNE *Jester*

HEAD ATHLETIC TRAINER,  
ASST. ATHLETIC DIRECTOR,  
SR. WOMAN ADMINISTRATOR  
[ajester4@naz.edu](mailto:ajester4@naz.edu)  
389-2838



SCOTT *Love*

CROSS COUNTRY,  
TRACK & FIELD COACH  
[elove9@naz.edu](mailto:elove9@naz.edu)  
389-2852



GAIL *Mann*

WOMEN'S SOCCER COACH  
[gmann8@naz.edu](mailto:gmann8@naz.edu)  
389-2813



DAVE *Marsh*

DIVING COACH  
[dmarsh3@naz.edu](mailto:dmarsh3@naz.edu)  
389-2198



RYAN *Martin*

ASSISTANT MEN'S  
LACROSSE COACH  
DIRECTOR of INTRAMURALS  
[rmartin3@naz.edu](mailto:rmartin3@naz.edu)  
389-2858



MIKE *Palermo*

EQUIPMENT  
ROOM MANAGER  
[mpalerm6@naz.edu](mailto:mpalerm6@naz.edu)  
389-2837



ROB *Randall*

MEN'S  
LACROSSE COACH  
[rrandal5@naz.edu](mailto:rrandal5@naz.edu)  
389-2194



JOE *Seil*

ASSISTANT ATHLETIC  
DIRECTOR/SID  
[jseil2@naz.edu](mailto:jseil2@naz.edu)  
389-2452



MARTIE *Staser*

MEN'S & WOMEN'S  
SWIMMING COACH  
[mstaser3@naz.edu](mailto:mstaser3@naz.edu)  
389-2198



LYNDSAY *Thomas*

ATHLETIC OFFICE  
COORDINATOR  
[lthomas4@naz.edu](mailto:lthomas4@naz.edu)  
389-2195



ANDREA *Tutino*

FIELD HOCKEY COACH  
[atutino0@naz.edu](mailto:atutino0@naz.edu)  
389-2199



PAUL *Waida*

MEN'S & WOMEN'S  
TENNIS COACH  
[pwaida7@naz.edu](mailto:pwaida7@naz.edu)  
389-2853



CAL *Wickens*

MEN'S & WOMEN'S  
VOLLEYBALL COACH  
[cwicken0@naz.edu](mailto:cwicken0@naz.edu)  
389-2189

# HEAD COACH Women's Soccer

## HEAD COACH Gail Mann



Returning for her 15th season as Nazareth's women's soccer coach, Gail Mann has helped the Golden Flyers maintain their standing among the nation's elite programs for more than a decade.

Although last year's 9-7-3 overall record snapped a string of 11 straight

seasons of double digit victories, Mann was able guide her team to an eighth straight Empire 8 Conference championship and the program's first NCAA Tournament berth since 2002.

Under Mann's direction, Nazareth made six straight NCAA Tournament appearances from 1997 through 2002. Only a few stray penalty kicks denied them access in 2003, 2004 and 2005. In addition, the Golden Flyers' 13-6-2 overall record in 2005 included the ECAC Upstate title.

Mann has been at the coaching forefront for all of the Golden Flyers' most significant achievements since taking over as coach in 1993. In just her second season, the Golden Flyers finished 9-8-2 and reached the NYSWCAA Tournament. In 1996, they rolled to a 16-6-1 record and secured berths in both the NYSWCAA and ECAC Tournaments.

Nazareth's steady progression continued under Mann's direction in 1997 as the team finished 16-1-2 and landed its first-ever NCAA Tournament berth. Nazareth's first NCAA game was a memorable one – a thrilling 3-2 triple overtime win over Oneonta. Mann was recognized that year as New York Region Coach of the Year, an honored that was duplicated in 2002. She was named Empire 8 Conference Coach of the Year in 1999 as Nazareth set a school record with 17 victories and captured the NCAA New York Region title.

Mann's 14-year coaching record of 175-74-23 computes to a .686 winning percentage, which ranks among the top 20 active coaches in Division III. Since 1995 she has coached 48 NYSWCAA all-stars, 36 regional All-Americans and five national All-Americans.

A native of Rochester, Mann came to Nazareth in '93 after five seasons as an assistant coach at SUNY Brockport. She was head coach of the New York West Olympic Development U-15 team from 1992-1998 and led the team to the Region 1 championship in 1995.

Mann graduated from Spencerport High School, where she excelled in soccer, basketball and softball. She played soccer at SUNY Cortland and was a starting striker on the 1986 team that reached the Division III Final Four.

At Nazareth, in addition to coaching soccer, Mann was an assistant coach for the Golden Flyers' women's lacrosse team for 10 seasons (1995-2004) and helped the team to three NCAA tournament berths. She now serves as advisor to the Student Athlete Advisory Committee.



**GAIL MANN'S** | CAREER WINNING PERCENTAGE OF .686 RANKS AMONG THE TOP 20 IN DIVISION III AMONG ACTIVE COACHES.

YEAR	RECORD	POST SEASON	HEAD COACH
1983	6-5-2	Jacklin Randall-Ward	
1984	14-4-2	NYSIAW Tournament	Jacklin Randall-Ward
1985	12-7-0	NYSIAW Tournament	Jacklin Randall-Ward
1986	14-4-1	NYSWCAA Tournament	Jacklin Randall-Ward
1987	10-6-3		Jacklin Randall-Ward
1988	5-11-1		Ron Bartlett
1989	8-8-0		Ron Bartlett
1990	5-9-2		Ron Bartlett
1991	8-8-0		Chuck Salamone
1992	4-12-0		Chuck Salamone
1993	4-12-1		Gail Mann
1994	9-8-2	NYSWCAA Tournament	Gail Mann
1995	12-5-1		Gail Mann
1996	16-6-1	NYSWCAA, ECAC Tournaments	Gail Mann
1997	16-1-2	NCAA Tournament	Gail Mann
1998	15-4-0	NCAA Tournament	Gail Mann
1999	17-3-0	NCAA Quarterfinals	Gail Mann
2000	13-3-3	NCAA Tournament	Gail Mann
2001	12-5-1	NCAA Tournament	Gail Mann
2002	17-4-1	NCAA Tournament	Gail Mann
2003	11-5-4	ECAC Tournament	Gail Mann
2004	11-5-2		Gail Mann
2005	13-6-2	ECAC Champions	Gail Mann
2006	9-7-3	NCAA Tournament	Gail Mann
Totals	261-148-34		

YEAR BY YEAR *Records*

### ASST COACH *Billy Stojanovski*



Billy Stojanovski joined the Nazareth coaching staff in 2000 and has helped guide the Golden Flyers to seven Empire 8 Conference titles and four NCAA tournament berths. Along with serving as the Golden Flyers' head assistant, Stojanovski trains the goalkeepers.

A native of Rochester, Stojanovski played three seasons of soccer at Division I University of Buffalo as a goalkeeper and still ranks among the program's all-time leaders in saves and goals-against average. He graduated from Buffalo with a degree in mechanical engineering and has worked at Xerox since 1994.

Before coming to Nazareth, Stojanovski was an assistant coach at RIT for three seasons. He also has coached the Rochester Junior Rhinos since 1998 and helped direct them to a state title in 1999.

His coaching experience also includes a stint with Buffalo Germania from 1994-97 (two State Cup Championships and two regional appearances, and the first New York State West girls club team to reach the regional semifinals) and involvement with the Rochester District Olympic Development program.

He also has assisted in the women's scholastic division of the Empire State Games and has helped the Western New York team to five gold medals and one bronze medal in the past six years.

Stojanovski resides in Rochester with his wife, Cheryl, daughter Reese and son Evan.

### ASST COACH *Sandy Brody*



Sandy Brody begins her fifth season with the Golden Flyers as a part-time assistant coach.

Brody grew up in Florida and excelled in soccer, softball and volleyball at Taravella High in Coral Springs. She went on to play Division I soccer at the University of North Carolina-Asheville, where she helped the

team win the Big South Conference title in 1995.

She graduated from UNC Asheville in 1997 with a degree in Mathematics. Since then, she has fulfilled teaching requirements in physical education and has had teaching assignments at Marcus Whitman Central in Rushville, N.Y. and at Brighton Central. She also has experience as an area soccer official.

Brody resides in Rochester with her husband, Harlan, and works as a real estate manager.

Nazareth College Sports Hotline:  
(585) 389-2095

On the world wide web: [www.nazathletics.com](http://www.nazathletics.com)

FOLLOW THE *Golden Flyers*

## NCAA TOURNAMENT

### 1997

**Nazareth 3**, Oneonta 2, 3ot (H)  
Rochester 3, **Nazareth 2** (at William Smith)

### 1998

Rochester 1, **Nazareth 0**, 3ot (H)

### 1999

**Nazareth 1**, Oneonta 0, 2ot (at William Smith)

**Nazareth 2**, William Smith 0 (A)

Williams 2, **Nazareth 0** (H)

### 2000

**Nazareth 7**, Penn State Behrend 1 (H)

William Smith 2, **Nazareth 1** (A)

### 2001

**Nazareth 2**, Rochester 1 (H)

Union 3, **Nazareth 2** (at William Smith)

### 2002

**Nazareth 3**, Grove City 2 (H)

William Smith 2, **Nazareth 1**, pks (A)

### 2006

Montclair State 1, **Nazareth 0** (at Elizabethtown, Pa.)

## ECAC TOURNAMENT

### 1996

**Nazareth 4**, College of Notre Dame 0 (H)

Rensselaer 2, **Nazareth 1** (A)

### 2003

Rochester 4, **Nazareth 0** (H)

### 2005

**Nazareth 1**, Fredonia 0 (H)

**Nazareth 3**, Geneseo 1 (H)

## EMPIRE 8 TOURNAMENT

### 2002

**Nazareth 5**, Elmira 0 (at Ithaca)

**Nazareth 1**, Ithaca 0 (A), penalty kicks, 4-2

### 2003

**Nazareth 5**, RIT 1 (H)

**Nazareth 0**, Ithaca 0 (H)

Teams declared E8 co-champions; Ithaca advanced on penalty kicks, 4-3

### 2004

**Nazareth 6**, Elmira 0 (H)

**Nazareth 2**, Ithaca 2 (A)

Teams declared E8 co-champions; Ithaca advanced on penalty kicks, 9-8

### 2005

**Nazareth 4**, St. John Fisher 3 (H)

**Nazareth 0**, Ithaca 0 (H)

Teams declared E8 co-champions; Ithaca advanced on penalty kicks, 5-4

### 2006

**Nazareth 1**, Ithaca 0, ot (A)

**Nazareth 2**, Utica 1, ot (A)



“IT WAS SO  
EXCITING FOR US...  
WE WERE KIND OF UP AND  
DOWN ALL SEASON, BUT WE  
PULLED IT TOGETHER AT  
THE END.”

-- HEAD COACH GAIL MANN

There were no penalty kicks this time. Just a pair of overtime nail biters that ultimately brought the Golden Flyers back where they belong in women's soccer – the NCAA Division III Tournament.

After sharing the Empire 8 Conference title with Ithaca for four straight seasons – and losing out on an NCAA bid through penalty kicks for the last three – Nazareth claimed the conference title yet again in 2006 to win their eighth straight title and their first NCAA Tournament berth since 2002.

“It was so exciting for us,” said Nazareth Coach Gail Mann, whose team finished 9-7-3 overall following a 1-0 first-round NCAA loss to Montclair State. “We were kind of up and down all season, but we pulled it together at the end.”

At the end, Nazareth showed superb defensive resilience – particularly in overtime – to gain a pair of road wins in the conference tournament.

Nazareth visited nemesis Ithaca Nov. 2 and appeared destined for yet another penalty kick decision until senior Rosie Simiele

scored in the second overtime to break a scoreless tie and send the Golden Flyers to the championship game.

Nazareth traveled to Utica two days later and got an overtime goal from sophomore Kelly Finn to gain a 2-1 sudden victory.

Unfortunately, Nazareth's stay in the NCAA Tournament was short as Montclair State scored in the second half for a 1-0 win over the Golden Flyers. Nazareth lost despite an 18-10 advantage in shots.

Nazareth started the season impressively in winning four of its first five non-conference games, but then displayed inconsistency by losing three times in E8 play to finish fourth in the regular-season standings.

Simiele, a first-team all-conference selection, was the team's leading scorer with 21 points on seven goals and seven assists. Sophomore forward Rachel Cushman and sophomore defender Ashley Clinton also earned first-team all-star honors.

Senior midfielder Jessica Rogers was named to the second team and junior midfielder Julie Birbilis was honorable mention.



**ABOVE** | ROSIE SIMIELE (TOP) WAS A FIRST-TEAM EMPIRE 8 CONFERENCE ALL-STAR AND THE GOLDEN FLYERS' LEADING SCORER IN 2006.



**BELOW** | WHILE JESSICA ROGERS WAS A SECOND-TEAM ALL-CONFERENCE PICK IN 2006.



## Numerical

#	NAME	POS.	YR.	HT.	HIGH SCHOOL/HOMETOWN
00	SHANNON BURNS*	G	SR.	5-5	COLONIE/ALBANY, NY
1	HILLARY SIMON	G	FR.	5-11	HOMER/HOMER, NY
2	SANDRA TOTH*	M	JR.	5-6	COLUMBIA/EAST GREENBUSH, NY
3	ALICIA FRANCESCHI*	M	SO.	5-3	LIVERPOOL/LIVERPOOL, NY
4	TARYN BILODEAU*	F	JR.	5-3	McGRAW/McGRAW, NY
5	KELLY FINN*	F	JR.	5-2	HOMER/CORTLAND, NY
6	MEGHAN FINN	B	FR.	5-7	HOMER/CORTLAND, NY
7	KATHRYN BOUGHTON	M	FR.	5-7	LANCASTER/LANCASTER, NY
8	ASHLEY CLINTON*	B-M	JR.	5-2	SHENENDEHOWA/REXFORD, NY
9	RACHEL CUSHMAN*	F	JR.	5-7	IRONDEQUOIT/ROCHESTER, NY
10	ABBEY BENTZ	M	FR.	5-4	PERRY HALL/BALTIMORE, MD
11	KATHLEEN NILAND*	M	SO.	5-8	CHRISTIAN BROTHERS ACADEMY/SYRACUSE, NY
12	EMILY ZURSCHMIT*	B	JR.	5-6	CAMDEN/CAMDEN, NY
13	RACHEL PIEMONTE	F	FR.	5-2	WILLIAMSVILLE EAST/EAST AMHERST, NY
14	ERICA CONTE	F	FR.	5-8	CALEDONIA-MUMFORD/CALEDONIA, NY
16	ALICCA KOWALCZYK*	M	SO.	5-4	NOTRE DAME/UTICA, NY
17	CARLY SCHURMAN*	B	JR.	5-3	C.W. BAKER/LIVERPOOL, NY
19	CAROLINE PARSONS*	F	SR.	5-11	GLENS FALLS/GLENS FALLS, NY
20	KARA EAKER	B	FR.	5-7	BURNT HILLS-BALLSTON LAKE/SCOTIA, NY
21	LINDSAY CURLEY	B	FR.	5-1	SOUTH GLENS FALLS/SOUTH GLENS FALLS, NY
22	JULIE BIRBILIS*	M	SR.	5-8	BALLSTON SPA/BALLSTON SPA, NY
26	CAITLIN WELCH*	M	SO.	5-4	PAVILION/WYOMING, NY
27	KELLY SWEENEY	F	FR.	5-10	BALLSTON SPA/BALLSTON SPA, NY
28	CAITY RICHARDSON*	M	SR.	5-5	PITTSFORD MENDON/PITTSFORD, NY
33	POLLY MUEHLENKAMP*	G	SO.	5-6	WYOMING/WYOMING, OH

HEAD COACH: Gail Mann, 15th season

ASSISTANT COACHES: Billy Stojanovski, Sandy Brody

## Alphabetical

#	NAME
10	ABBEY BENTZ
4	TARYN BILODEAU*
22	JULIE BIRBILIS*
7	KATHRYN BOUGHTON
00	SHANNON BURNS*
8	ASHLEY CLINTON*
14	ERICA CONTE
21	LINDSAY CURLEY
9	RACHEL CUSHMAN*
20	KARA EAKER
5	KELLY FINN*
6	MEGHAN FINN
3	ALICIA FRANCESCHI*
16	ALICCA KOWALCZYK*
33	POLLY MUEHLENKAMP*
11	KATHLEEN NILAND*
19	CAROLINE PARSONS*
13	RACHEL PIEMONTE
28	CAITY RICHARDSON*
17	CARLY SCHURMAN*
1	HILLARY SIMON
27	KELLY SWEENEY
2	SANDRA TOTH*
26	CAITLIN WELCH*
12	EMILY ZURSCHMIT*

\*RETURNING PLAYERS

**FRONT ROW (LEFT TO RIGHT)** – ALICCA KOWALCZYK, ASHLEY CLINTON, KELLY FINN, TARYN BILODEAU, ALICIA FRANCESCHI, CARLY SCHURMAN, RACHEL PIEMONTE.

**MIDDLE ROW** – LINDSAY CURLEY, KARA EAKER, EMILY ZURSCHMIT, CAITY RICHARDSON, JULIE BIRBILIS, KATHLEEN NILAND, CAITLIN WELCH, ABBEY BENTZ, POLLY MUEHLENKAMP.

**BACK ROW** – GAIL MANN (HEAD COACH), SANDY BRODY (ASSISTANT COACH), ERICA CONTE, KATHRYN BOUGHTON, RACHEL CUSHMAN, CAROLINE PARSONS, KELLY SWEENEY, SANDI TOTH, MEGHAN FINN, HILLARY SIMON, SHANNON BURNS, BILLY STOJANOVSKI (ASSISTANT COACH).

## NAZARETH WOMEN'S SOCCER 2007: "WE ARE ONE"

After the last ball was kicked to wrap up the 2006 women's soccer season, Nazareth Coach Gail Mann sensed that something might have been missing.

Even though the Golden Flyers reached their ultimate goals in winning the Empire 8 Conference championship and gaining a berth to the NCAA Division III Tournament, she felt that the Golden Flyers didn't always handle adversity with the greatest of ease.

That's why Mann has instituted a specific battle cry for 2007: 'We Are One!'

"We want to win together and lose together with no second guessing," said Mann, now in her 15th season as head coach. "This team is as talented as any that we've had and it can go as far as it wants to go."

“IT'S ALWAYS  
EXCITING... SAID MANN, WE HAVE  
SOME GREAT SENIOR LEADERSHIP  
AND SOME TALENTED YOUNGER  
PLAYERS WHO WILL GET A CHANCE TO  
CONTRIBUTE RIGHT AWAY.”

-- HEAD COACH GAIL MANN

Nazareth lost its 2006 leading scorer in first-team all-conference performer Rosie Simiele, but Mann is confident that the Golden Flyers are equipped with the right blend of youth and experience to overcome that as they aim for their ninth straight Empire 8 title.

#### Here's a position-by-position breakdown:

##### FORWARD

Junior Rachel Cushman earned first-team all-conference honors in 2006 and figures to be among the league's top offensive threats this season. She has scored 18 goals over the past two seasons.

Junior Kelly Finn is equally capable after scoring five goals last season, including the overtime game-winner against Utica in a 2-1 Empire 8 Conference championship game win in '06.

Senior Caroline Parsons seems to have finally overcome a series of injuries that have nagged her for three seasons and is poised to contribute up top along with speedy sophomore Caitlin Welch.

##### MIDFIELD

With Simiele gone, the Golden Flyers will look to senior Caity Richardson and junior Ashley Clinton to control the center of the field.

Senior Julie Birbilis, an honorable mention all-conference player last season, has the most experience on the outside along with juniors Taryn Bilodeau and Sandi Toth.

Mann said there's a good chance that as many as two first-year players could start as outside backs with freshmen Kathryn Boughton, Lindsay Curley, Kara Eaker and Meghan Finn considered the leading candidates.

##### GOALIE

Senior captain Shannon Burns has started regularly the past two seasons and has 10 career shutouts to her credit.

She could be pushed for playing time by sophomore Polly Muehlenkamp and 5-11 freshman Hillary Simon.

"It's always exciting," said Mann, who will be assisted once again by Billy Stojanovski and Sandy Brody. "We have some great senior leadership and some talented younger players who will get a chance to contribute right away."



**DEFENDER** | EMILY ZURSCHMIT RETURNS FOR HER THIRD SEASON WITH THE GOLDEN FLYERS.

Sophomores Alicia Franceschi, Alicca Kowalczyk and Kathleen Niland also will compete for playing time along with promising freshmen Abbey Bentz, Erica Conte, Rachel Piemonte and Kelly Sweeney.

##### DEFENSE

The Golden Flyers yielded less than a goal per game in surging to the '06 conference title.

With Clinton, a first-team all-conference defender in '06, likely moving to midfield, the Golden Flyers will seek leadership roles from juniors Carly Schurman and Emily Zurschmit.



# Women's Soccer RETURNING PLAYERS

#00

SENIOR



SHANNON Burns

Social Work major. . . daughter of Thomas and Kim Burns, **ALBANY, NY**. . . team captain. . . returning for her fourth season, Burns started all 19 games for the Golden Flyers in 2006 and recorded 96 saves for a 0.91 goals-against average and six shutouts. . . had a career-high 12 saves in a 0-0 tie with the University of Rochester. . . honored three times by the Empire 8 as Goalie of the Week. . . **2005:** Burns started 16 of the Golden Flyers' 21 games and produced a 1.02 goals-against average with 49 saves and four shutouts. . . named Empire 8 Goalie of the Week for the period ending Sept. 18. . . **2004:** appeared in seven games, including two as a starter. . . posted nine saves for a 2.39 goals-against average. . . **SCHOLASTIC:** a graduate of Colonie High School, Burns played four seasons of varsity soccer as a goalkeeper . . . served as team captain in 2003 and selected team's Defensive MVP, amassing more than 200 saves. . . also played four seasons of lacrosse. . . selected team's Most Improved Player and Defensive MVP.

YEAR	GP/MIN.	GA/AVG.	SV./PCT.	SHO
2004	7/301	8/2.39	9/.529	0
2005	18/1236	14/1.02	49/.778	4
2006	19/1672	17/0.91	96/.850	6
TOTALS	44/3209	39/1.13	154/.798	10

#2

JUNIOR



SANDRA Toth

Biology major. . . daughter of Theresa Toth, **East Greenbush, NY**. . . returning for her third season, Toth played in 18 games in 2006 including one as a starter. . . Toth recorded a goal in a 3-0 victory over Allegheny and in a 3-1 win over St. John Fisher. . . **2005:** Toth played in 19 games, including four as a starter. . . finished fourth on the team in scoring with 14 points on six goals and two assists. . . had one goal and one assist in a 5-2 win at Brockport 9/8/05. . . **SCHOLASTIC:** a graduate of Columbia High School, Toth played two seasons of varsity soccer there and was a second-team Suburban Council all-star in 2004. . . also was captain of the Adirondack team that won a bronze medal in the Empire State Games in 2004. . . also excelled as a sprinter on the track team. . . recipient of team's Most Valuable Sprinter award. . . a member of National Honor Society.

YEAR	G	A	PTS.
2005	6	2	14
2006	2	1	5
TOTALS	8	3	19



**ABOVE |** GOALIE SHANNON BURNS POSTED SIX SHUTOUTS IN 19 STARTS FOR THE GOLDEN FLYERS IN 2006.

**BELOW |** JUNIOR MIDFIELDER SANDI TOTH HAS SCORED EIGHT GOALS FOR THE GOLDEN FLYERS OVER THE LAST TWO SEASONS.



#3

SOPHOMORE

#4

JUNIOR



ALICIA Franceschi

Communication Sciences & Disorders major. . . daughter of Dino and Sharon Franceschi, **LIVERPOOL, NY**. . . returning for her second season in 2006 Franceschi appeared in 17 games for the Golden Flyers. . . recorded one goal in a 2-0 victory over Geneseo. . . **SCHOLASTIC:** a graduate of Liverpool High School, Franceschi played three seasons of varsity soccer there. . . served as team captain in 2005 and was a three-time Onondaga High School League all-star. . . helped team to Section Three co-championships in 2003 and 2005. . . competed in Empire State Games in '05 and was named co-MVP of Exceptional Senior all-star game. . . also played two seasons of varsity lacrosse. . . did volunteer work for Special Olympics and participated in Symphonic Band Symposium.

YEAR	G	A	PTS.
2006	1	0	2
TOTALS	1	0	2



TARYN Bilodeau

Physical Therapy major. . . daughter of Tom and Sheree Bilodeau, **McGRAW NY**. . . returning for her third season, Bilodeau appeared in 19 games in 2006, including four as a starter. . . Bilodeau scored the game-winning goal against Geneseo in a 2-0 victory. . . **2005:** Bilodeau played in nine games for the Golden Flyers and scored a goal against Alfred 10/5/05. . . **SCHOLASTIC:** a graduate of McGraw High School, Bilodeau was a four-year standout in soccer and softball. . . in 2004 was named New York State Class D Player of the Year after leading the Central Counties League in scoring and helping McGraw to the state title. . . also earned league and Section Three all-star honors. . . also led the league in scoring in 2002 and 2003 and was a second-team all-state selection in '03. . . helped team to three league titles and two sectional crowns. . . played shortstop in softball and was a two-time CCL all-star.

YEAR	G	A	PTS.
2005	1	0	2
2006	1	1	3
TOTALS	2	1	5



**ABOVE** | SOPHOMORE ALICIA FRANCESCHI SCORED A GOAL IN NAZARETH'S 2-0 WIN OVER GENESEO IN 2006.

**BELOW** | JUNIOR TARYN BILODEAU RETURNS FOR HER THIRD SEASON.



#5 JUNIOR



KELLY Finn

Nursing major. . . daughter of John Finn, Cortland, NY and Tammy Finn, HOMER, NY. . . returning for her third season, Finn played in 16 games in 2006, including five as a starter. . . Finn ranked third on the Golden Flyers in scoring with five goals and one assist. . . scored the game-winning goal in overtime of a 2-1 win at Utica in the Empire 8 Conference championship game. . . also scored against Skidmore, St. Lawrence, Union and Alfred . . . **2005:** Finn appeared in 18 games for the Golden Flyers and contributed two goals and one assist. . . **SCHOLASTIC:** a graduate of Homer Central, Finn played four seasons of varsity soccer there. . . earned first-team Onondaga League all-star honors in 2003 and 2004. . . also earned all-Central New York honors and first-team all-state in '04. . . had 20 goals and 11 assists in 2004 and 54 goals and 31 assists for her career.

YEAR	G	A	PTS.
2005	2	1	5
2006	5	1	11
TOTALS	7	2	16

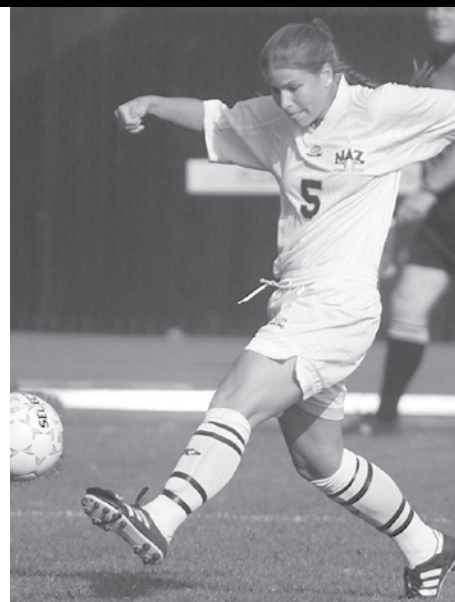
#8 JUNIOR



ASHLEY Clinton

Physical Therapy major. . . daughter of Scott and Simone Clinton, REXFORD, NY. . . team captain. . . returning for her third season, Clinton started all 19 games for the Golden Flyers in 2006 and recorded one assist against Wittenberg. . . received first-team all-conference honors and third-team all-Northeast Region honors after helping hold opponents to an average of less than one goal per game. . . **2005:** Clinton emerged as a dependable player, starting all 21 games and contributing two goals and one assist. . . earned second-team Empire 8 Conference all-star honors and was named to the NYSWCAA all-star team. . . **SCHOLASTIC:** a graduate of Shenendehowa High in Clifton Park, Clinton played three seasons of varsity soccer there and was a Suburban Council all-star. . . also earned fourth-team all-state honors. . . helped team to state title. . . a member of the National Honor Society.

YEAR	G	A	PTS.
2005	2	1	5
2006	0	1	1
TOTALS	2	1	6



**ABOVE** | JUNIOR KELLY FINN NETTED THE GAME-WINNING GOAL IN OVERTIME IN NAZARETH'S 2-1 WIN AT UTICA IN THE 2006 EMPIRE 8 CONFERENCE CHAMPIONSHIP GAME.

**BELOW** | JUNIOR ASHLEY CLINTON WAS A FIRST-TEAM EMPIRE 8 CONFERENCE ALL-STAR IN 2006.



NAZARETH COLLEGE  
**Soccer**™



#9

JUNIOR



RACHEL Cushman

Business Administration major. . . daughter of David and Judith Cushman, **ROCHESTER, NY**. . . returning for her third season, Cushman played in 18 games in 2006, including 17 as a starter. . . Cushman ranked second on the team in scoring with seven goals and one assist. . . Cushman scored one goal in victories against Allegheny, Brockport, and St. John Fisher, and two goals in victories over Hartwick and Alfred. . . received first-team all-conference honors and second-team all-Northeast Region honors. . . named Empire 8 Player of the Week for 10/8/06. . . **2005:** Cushman had a strong freshman season, appearing in all 21 games, including 19 as a starter. . . finished second on the team in scoring with 24 points on 11 goals and two assists. . . earned second-team Empire 8 Conference all-star honors and was named to the NYSWCAA all-star team. . . scored two goals in Nazareth's 4-3 win over St. John Fisher in the first round of the Empire 8 Conference Tournament 11/2/05. . . also scored twice in a 3-0 win over RIT 9/28/05. . . had a goal in a 3-1 win over Geneseo in the ECAC Upstate Championship game 11/13/05. . . named E8 Player of the Week for the period ending Nov. 6. . . **SCHOLASTIC:** a graduate of Irondequoit High School, Cushman was a standout in soccer, earning first-team Monroe County League all-star honors and first team all-Greater Rochester three times each. . . also earned all-state honors in 2003 and 2004 and was the leading scorer in Monroe County three years in a row. . . also excelled in volleyball, leading the team in kills twice and earning Monroe County League all-star honors in 2004 and 2005.

YEAR	G	A	PTS.
2005	11	2	24
2006	7	1	15
TOTALS	18	3	39

#11

SOPHOMORE



KATHLEEN Niland

Nursing major. . . daughter of Tom and Beth Niland, **SYRACUSE, NY**. . . returning for her second season, Niland appeared in seven games and scored one goal in Nazareth's game against Alfred. . . **SCHOLASTIC:** a graduate of Christian Brothers Academy, Niland was a standout in soccer and basketball. . . earned Onondaga High School League all-star honors for soccer in 2003, 2004 and 2005. . . recipient of all-Central New York honors in '05. . . helped team to Section Three titles in 2002, 2004 and 2005.

YEAR	G	A	PTS.
2006	1	0	2
TOTALS	1	0	2



**ABOVE** | JUNIOR RACHEL CUSHMAN WAS A FIRST-TEAM EMPIRE 8 CONFERENCE ALL-STAR SELECTION FOR THE GOLDEN FLYERS IN 2006.

#12

JUNIOR



EMILY Zurschmit

Communication Sciences and Disorders major. . . daughter of Frank and Rita Zurschmit, **CAMDEN, NY**. . . returning for her third season, Zurschmit appeared in 18 games in 2006 including 11 as a starter. . . Zurschmit recorded one assist in a victory over Hartwick. . . also competed for the Golden Flyers in swimming and diving. . . **2005:** Zurschmit played in 16 games for Nazareth, including three as a starter. . . **SCHOLASTIC:** a graduate of Camden High School, Zurschmit played four seasons of varsity soccer there and was a four-time Tri-Valley League all-star. . . recipient of scholar-athlete award for four years and a member of the National Honor Society. . . also competed in track.

YEAR	G	A	PTS.
2006	0	1	1
TOTALS	0	1	1

# Women's Soccer RETURNING PLAYERS

#16

SOPHOMORE



ALICCA Kowalczyk

Undecided on major. . . daughter of Andrew and Marilyn Kowalczyk, **UTICA, NY**. . . returning for her second season, Kowalczyk appeared in two games for Nazareth during the 2006 season. . . **SCHOLASTIC:** a graduate of Notre Dame High School in Utica, Kowalczyk played five seasons of varsity soccer. . . was a first-team Tri-Valley League all-star in 2004 and 2005. . . named to Section Three all-star team in '04 and '05 and was the female recipient of the Athlete of the Year Award from the Notre Dame Sports Boosters for '05-06. . . recipient of the U.S. Marine Corps Distinguished Athlete Award. . . member of the National Honor Society and recipient of Kodak Young Leaders Award.

#19

SENIOR



CAROLINE Parsons

Physical therapy major. . . daughter of Bruce and Kate Parsons, **GLENS FALLS, NY**. . . returning for her fourth season, Parsons appeared in 17 games, including 10 as a starter. . . Parsons contributed one goal and one assist in a 3-1 victory over St. John Fisher and had a goal in a 2-1 victory over Utica in the conference championship. . . **2005:** Parsons was limited to three games due to injury . . . scored a goal in the Golden Flyers' 5-2 win at Brockport 9/8/05. . . **2004:** played in 11 games and scored a goal in the Golden Flyers' 2-1 loss to Mary Washington 9/4/04. . . **SCHOLASTIC:** a graduate of Glens Falls High School, Parsons was a four-year soccer standout there. . . amassed 84 career goals and was a three-time first-team Foothills Council all-star. . . team captain in 2002 and 2003. . . also excelled in basketball and track. . . placed fourth at state meet in the triple jump and helped team to Section Two Class B title in track. . . played one season for the football team and became the first girl in Section Two to kick a field goal and extra point.

YEAR	G	A	PTS.
2004	1	0	2
2005	1	0	2
2006	2	1	5
TOTALS	4	1	9



**ABOVE** | JUNIOR CARLY SCHURMAN STARTED FIVE GAMES FOR THE GOLDEN FLYERS IN 2006.

**BELOW** | CAROLINE PARSONS HAD A GOAL AND AN ASSIST IN NAZARETH'S 3-1 WIN OVER ST. JOHN FISHER IN 2006.

#17

JUNIOR



CARLY Schurman

Social Work major. . . daughter of Jack Schurman, **BALDWINVILLE, NY**. . . returning for her third season, Schurman played in 11 games for the Golden Flyers, including five as a starter. . . **2005:** Schurman played in 13 games for the Golden Flyers as a defender, including 10 as a starter. . . contributed an assist in Nazareth's 7-0 win over Alfred 10/5/05. . . **SCHOLASTIC:** a graduate of C.W. Baker High School, Schurman played three seasons of varsity soccer there and was a first-team Section Three all-star as well as first-team all-Central New York and first-team all-League. . . helped team win Class A state title in 2002.



# RETURNING PLAYERS

# Women's Soccer

#22 SENIOR

#26 SOPHOMORE



JULIE Birbilis

Business Administration major. . . daughter of Gregory and Susan Birbilis, **BALLSTON SPA, NY.** . . returning for her fourth season, Birbilis started all 19 games in 2006 for the Golden Flyers. . . Birbilis recorded one goal and five assists, including a goal and two assists in a victory over Alfred. . . received all-conference honorable mention honors. . . **2005:** Birbilis appeared in 20 games, including 19 as a starter. . . contributed three goals and four assists. . . had one goal and one assist in a 7-0 win at Alfred 10/5/05. . . also scored the first goal directly off a corner kick in Nazareth's 3-1 win over Geneseo in the ECAC Upstate Championship game 11/13/05. . . **2004:** appeared in 12 games and contributed one assist. . . also competed for the Golden Flyers' indoor and outdoor track and field teams. . . **SCHOLASTIC:** a graduate of Ballston Spa High School, Birbilis played four seasons of varsity soccer there. . . a three-time first-team Foothills Council all-star, Birbilis also was a fifth-team all-state selection, team captain and team MVP in 2003. . . set a school record with 17 assists while leading team to Foothills Council championship and Section Two Class AA semifinals in '03. . . competed for Adirondack Region in Empire State Games in '03 and is a member of Clifton Park Premier and Albany Blackwatch teams. . . also a standout in track and field, Birbilis was a two-time team MVP and set school records in the 400 hurdles, 2000 steeplechase and 1500-meter run. . . named Ballston Spa Female Athlete of the Year for 2003-04. . . earned several academic awards, including scholarships from the Ballston Spa Soccer Club and the Ballston Booster Club. . . competed in Empire State Games the past three summers... served as captain of the Adirondack team in '06 and '07.

YEAR	G	A	PTS.
2004	0	1	1
2005	3	4	10
2006	1	5	7
TOTALS	4	10	18



CAITLYN Welch

Spanish major. . . daughter of Kyle and Debra Welch, **WYOMING, NY.** . . returning for her second season, Welch appeared in 12 games in 2006 and registered a goal in Nazareth's victory over Alfred. . . **SCHOLASTIC:** a graduate of Pavilion Central, Welch played four seasons of varsity soccer and was a Genesee Region all-star as well as team MVP in 2005. . . also excelled as a sprinter in track, Welch was a two-time Section Five champ in the 100-meter dash. . . selected team MVP and also captured the sectional title in the 200-meter dash in '06 . . . holds Pavilion school records in 100-, 200- and 400-meter dashes as well as 400-meter relay. . . member of Genesee Lancers Soccer Club. . . recipient of Pavilion Outstanding Achievement Award for Art as well as Nazareth Merit Scholarship.

YEAR	G	A	PTS.
2006	1	0	2
TOTALS	1	0	2



**ABOVE |** JULIE BIRBILIS WAS AN HONORABLE MENTION ALL-CONFERENCE SELECTION FOR THE GOLDEN FLYERS IN 2006.

**BELOW |** SOPHOMORE CAITLIN WELCH SCORED A GOAL IN NAZARETH'S VICTORY OVER ALFRED IN 2006.





# Women's Soccer RETURNING PLAYERS

#28 SENIOR



CAITY Richardson

Communication Sciences and Disorders major. . . daughter of David and Robin Richardson, PITTSFORD, NY. . . returning for her fourth season, Richardson appeared in 19 games in 2006, including nine as a starter. . . also a member of the Golden Flyers' lacrosse team. . . **2005:** Richardson appeared in 20 games in 2005, including two as a starter. . . contributed one assist. . . **2004:** played in 17 games and delivered one goal and two assists . . . scored her first career goal in a 4-0 win over Utica . . . **SCHOLASTIC:** a graduate of Pittsford Mendon High School, Richardson was a four-year standout in soccer . . . earned an array of honors in 2003, including all-state, first-team all-Greater Rochester and first-team all-Monroe County. . . helped team to Section Five championship. . . also a standout in lacrosse, Richardson earned Monroe County League all-star honors.

YEAR	G	A	PTS.
2004	1	2	4
2005	0	1	1
TOTALS	1	3	5

#33 SOPHOMORE



POLLY Muehlenkamp

Physical Therapy major. . . daughter of Tom and Holly Muehlenkamp, Cincinnati, Ohio. . . returning for her second season, Muehlenkamp appeared in three games during the 2006 season. . . Muehlenkamp had a goals-against average of 0.98 and made two saves in 92 minutes. . . also a member of Nazareth's softball team . . . **SCHOLASTIC:** a graduate of Wyoming High School near Cincinnati, Muehlenkamp was a standout in soccer and softball. . . starting goalie in soccer for three seasons, helped team to two district titles and earned Cincinnati Hills League all-star honors. . . served as team captain in 2006 and selected team MVP. . . also was two-time team MVP as a pitcher in softball. . . earned CHL all-star honors three times. . . recipient of Gene Pitman Athletic Boosters Scholarship and the Fred S. Dewey Award as Wyoming's top senior athlete for 2005-06.

YEAR	GP/MIN.	GA/AVG.	SV./PCT.	SHO
2006	3/92	1/0.98	2/.667	0
TOTALS	3/92	1/0.98	2/.667	0



**ABOVE** | SENIOR CAITY RICHARDSON PLAYED IN ALL 19 GAMES FOR THE GOLDEN FLYERS IN 2006.

## GOLDEN FLYERS VS ALL OPPONENTS

University at Albany	0-1	Gettysburg, Pa.	2-0	Ohio Northern	0-0-1	Simmons, Mass.	1-0
Alfred	13-8-1	Greensboro, N.C.	1-0	Ohio Wesleyan	2-1	Skidmore	0-3
Allegheny, Pa.	2-1	Grove City, Pa.	1-0	Oneonta	2-2	Slippery Rock, Pa.	2-0
Brockport	12-11-2	Hamilton	0-1	Oswego	5-8-1	Stevens	0-0-0
Buffalo State	7-4-2	Hartwick	10-4	Penn State Behrend	3-0	Union	1-6-1
University of Buffalo	2-2-1	Hilbert	3-0	Penn State	0-1	Utica College	19-4
Binghamton	2-0-1	Houghton	8-3	Plattsburgh	0-1	SUNY Utica	1-0
UC-San Diego	0-1	Ithaca	6-8-6	Point Loma, Calif.	1-0	Vassar	3-1
Canisius	3-1	Kean, N.J.	0-0-0	Potsdam State	1-0-1	Virginia Wesleyan	1-1
Colgate	0-1	Keene State, Vt.	0-0-0	Randolph-Macon, Va.	1-0	Wellesley, Mass.	1-0
Cortland	5-7	Keuka	9-5	Rensselaer	0-1	Wells	12-0
Daemen	3-0	Lynchburg, Va.	1-1	Roberts Wesleyan	14-1	Westfield State, Mass.	1-0
Denison, Ohio	2-1	Mary Washington	0-1-1	RIT	16-8-5	Williams, Mass.	0-1
Elizabethtown, Pa.	1-0	Methodist, N.C.	2-0	University of Rochester	4-8-2	William Smith	3-14-1
Elmira	21-5	Mt. Union, Ohio	2-0	St. Bonaventure	4-3-1	William Smith 'B'	1-0
Franklin & Marshall, Pa.	1-0	Montclair State	0-1	St. John Fisher	17-2-1	Wilkes, Pa.	0-0
Fredonia	2-6-1	College of Notre Dame, Md.	1-0	St. Lawrence	6-1-2	Wilmington, Ohio	1-0
Geneseo	10-5-1	Niagara	3-3-2	Salisbury State, Md.	1-0	Wittenberg	1-0



**FRESHMAN GOALIE:** Biology major... born 12/31/88... daughter of Linda Simon, **HOMER, NY...** a graduate of Homer Central, Simon played four seasons of varsity soccer as a goalkeeper and was a two-time Central New York all-star and a three-time Onondaga League all-star... named to East Region all-star team for '06 by the National Soccer Coaches Association of America... helped soccer team to Liberty League and Section Three titles in '06... also excelled in basketball... twice selected as team MVP and a second-team Liberty League all-star in '06-07... named Homer's Athlete of the Year for '06-07 and served as class president in '07.



**FRESHMAN I FORWARD:** Nursing major . . . born 10/28/89. . . daughter of John Finn, **CORTLAND, NY**. . . and Tammy Finn, Homer, NY. . . a graduate of Homer High, Finn (younger sister of Kelly) played three seasons of varsity soccer and earned first-team Onondaga League all-star honors in 2006 and second-team honors in '06. . . also a third-team all-Central New York choice in '06. . . helped team to league and Section Three titles in 2006. . . played three seasons of basketball.



**FRESHMAN MIDFIELDER:** Math Education major... born 11/14/89... daughter of Barbara Boughton, **LANCASTER, NY**... a graduate of Lancaster High School, Boughton played three seasons of varsity soccer there and helped team win the 2006 State Cup Championship... was a two-time Erie County Interscholastic Conference all-star as a center midfielder... also earned ECIC honors in basketball while helping team to two league titles... an honor roll student for four years and recipient of scholar-athlete award as a senior.



**FRESHMAN | MIDFIELDER:** Undecided on major. . . born 1/6/89. . . daughter of Tracey Bentz, **BALTIMORE, MD.** . . a graduate Perry Hall High School, Bentz played three seasons of varsity soccer there as a midfielder. . . served as team captain in helping team win regional championship in 2006 and county title in '05. . . also played two seasons of basketball and was the team's recipient of the Unsung Hero Award.



**FRESHMAN | FORWARD:** Business Education major. . . born 5/5/89. . . daughter of Mike and Janie Piemonte, **EAST AMHERST, NY**. . . a graduate of Williamsville East High School, Piemonte played four seasons of varsity soccer there and graduated as the school's all-time scoring leader. . . earned all-state honors in 2005 and 2006 as well as first-team all-Western New York and Erie County Interscholastic Conference. . . helped team to four straight league titles and the 2006 Section Six title.



**FRESHMAN I FORWARD:** Physical Therapy major... born 11/6/89... daughter of Lisa Merritt, CALEDONIA, NY... a graduate of Caledonia-Mumford High School, Conte was a standout in soccer and basketball there... earned first-team all-state and first-team all-Greater Rochester honors in soccer after completing career as Cal-Mum's all-time leading scorer with 104 goals and 44 assists... also a three-time Livingston County League all-star... a league all-star in basketball, Conte set school scoring records for career (1,165) and single season (405)... won several awards for academic excellence.



**FRESHMAN | BACK:** Undecided on major... born 11/3/89... daughter of Jeff and Wanda Eaker, **SCOTIA, NY...** a graduate of Burnt Hills-Ballston Lake High School, Eaker was a four-year standout as a defender in soccer... selected Section Two Class A Player of the Year in 2006 and fourth-team all-state... served as team captain in '05 and '06 as team won sectional and regional titles before falling in the state finals... helped team to state title in 2003... member of National Honor Society and Math and Science Honor Society... recipient of U.S. Marine Corps Distinguished Athlete Award.



**FRESHMAN I BACK:** Undecided on major. . . born 7/11/89. . . daughter of Patrick and Ann Curley, **SOUTH GLENS FALLS, NY**. . . a graduate of South Glens Falls High School, Curley was a four-year starter for the varsity soccer team. . . was the team's starting sweeper in 2006 and earned first-team Foothills Council all-star honors as well as team MVP accolades after leading team to Section Two championship. . . also a member of the indoor and outdoor track teams. . . recipient of scholar-athlete award for four years.



**FRESHMAN | FORWARD:** Undecided on major. . . born 5/6/89. . . daughter of Gary and Diane Sweeney, **BALLSTON SPA, NY**. . . a graduate of Ballston Spa High School, Sweeney played three seasons of varsity soccer and was an honorable mention all-conference selection in the Foothills Council. . . also excelled in basketball and lacrosse. . . was team's offensive MVP in lacrosse with a team-best 16 assists. . . made high honor roll.



# Women's Soccer

EMPIRE 8 CONFERENCE

## 2006 EMPIRE 8 FINAL STANDING

	League	Overall	
	W-L-T	W-L-T	Pct.
Ithaca	7-0-0	15-4-1	.775
RIT	5-1-1	7-8-3	.472
Utica	4-3-0	11-8-2	.571
<b>Nazareth</b>	<b>3-3-1</b>	<b>9-7-3</b>	<b>.553</b>
St. John Fisher	3-4-0	9-8-2	.526
Hartwick	2-4-1	5-12-2	.316
Elmira	1-4-2	2-10-3	.233
Alfred	0-6-1	3-13-1	.206

### EMPIRE 8 TOURNAMENT

#### Nov. 2, 2006

Nazareth 1, Ithaca 0 (ot)

Utica 1, RIT 0

#### Nov. 4, 2006

Nazareth 2, Utica 1 (ot)

### ALL-CONFERENCE TEAMS

#### First Team

##### FORWARDS

Chelsey Feldman, so. Ithaca

Colleen Masterson, jr. Ithaca

Rachel Cushman, so. Nazareth

##### MIDFIELDERS

Rosanne Simiele, sr. Nazareth

Dani Davis, jr. St. John Fisher

Ashley Williams, sr. Ithaca

##### BACKS

Kim Gillman, sr. Ithaca

Ashley Clinton, so. Nazareth

Joanne Gueverra, jr. Utica

Beth Hoover, jr. Ithaca

#### GOALIE

Ashley Taylor, so. Hartwick

Ashley Kaufman, jr. Utica

#### Second Team

##### FORWARDS

Ashley Granger, so. Utica

Danielle Smith, fr. Utica

Jennifer Vandenberg, sr. Hartwick

##### MIDFIELDERS

Jessica Rogers, sr. Nazareth

Kerry Walsh, sr. Utica

Kelly Zeppetella, so. St. John Fisher

##### BACKS

Emily Stecher, sr. RIT

Melissa Pratt, sr. RIT

Alissa Kelly, sr. Ithaca

Rachel Tinao, jr. Utica

#### Honorable Mention

FORWARDS – Alaina Chorney, RIT; Nicole

DiPietro, Alfred; Samantha Margulies, Ithaca;

Jessica Talbot, Elmira; Emily Traversi, RIT

MIDFIELDERS – Becca Malinowski, Hartwick;

Lindsay Ehrenkrantz, Ithaca; Julie Birbilis,

Nazareth; Mary Dougherty, St. John Fisher;

Erica Main, RIT; Sarah Richards, Utica

BACKS – Jen Blais, St. John Fisher; Kiersten

Drexler, St. John Fisher; Alyssa MacLachlan, St.

John Fisher; Katie Van Vorst, Hartwick; Yaicha

Winters, Alfred

GOALIES – Ashley Conti, RIT; Aimee Meachem,

Ithaca



ROSIE SIMIELE



RACHEL CUSHMAN



ASHLEY CLINTON

#### Offensive Player of the Year

Chelsey Feldman, Ithaca

#### Defensive Player of the Year

Ashley Williams, Ithaca

#### Rookie of the Year

Danielle Smith, Utica

#### Coach of the Year

Tom Natalie, RIT

#### Scoring Leaders

NAME, SCHOOL	G	A	PTS.
Chelsey Feldman, Ithaca	14	11	39
Colleen Masterson, Ithaca	11	4	26
Dani Davis, SJF	9	4	22
<b>Rosie Simiele, Nazareth</b>	<b>7</b>	<b>7</b>	<b>21</b>

#### Goals Against Average

NAME, SCHOOL	GP	GA	GAA
Aimee Meacham, Ithaca	20	8	0.47
Stacey Gable, SJF	19	9	0.89
<b>Shannon Burns, Nazareth</b>	<b>19</b>	<b>17</b>	<b>0.91</b>
Ashley Kaufman, Utica	19	19	1.02



## FINAL 2006 RESULTS

DATE	OPPONENT	RESULT	RECORD
# 9/2	<b>Allegheny</b>	<b>W, 3-0</b>	<b>1-0</b>
# 9/3	<b>Wittenberg</b>	<b>W, 1-0</b>	<b>2-0</b>
9/7	<b>Brockport</b>	<b>W, 2-1</b>	<b>3-0</b>
9/9	<b>Skidmore</b>	<b>L, 2-1</b>	<b>3-1</b>
9/12	<b>at Geneseo</b>	<b>W, 2-0</b>	<b>4-1</b>
* 9/16	<b>Utica</b>	<b>L, 2-0</b>	<b>4-2</b>
* 9/23	at Ithaca	L, 1-0	4-3
* 9/27	at St. John Fisher	W, 3-1	5-3
9/30	<b>St. Lawrence</b>	<b>L, 2-1 (ot)</b>	<b>5-4</b>
* 10/4	at RIT	T, 2-2 (ot)	5-4-1
* 10/7	<b>Hartwick</b>	<b>W, 3-0</b>	<b>6-4-1</b>
10/14	at William Smith	T, 1-1 (ot)	6-4-2
10/18	<b>Rochester</b>	<b>T, 0-0 (ot)</b>	<b>6-4-3</b>
* 10/21	at Elmira	L, 2-1	6-5-3
* 10/24	<b>Alfred</b>	<b>W, 8-0</b>	<b>7-5-3</b>
10/28	<b>Union</b>	<b>L, 2-1</b>	<b>7-6-3</b>
^ 11/2	at Ithaca	W, 1-0 (ot)	8-6-3
^ 11/4	at Utica	W, 2-1 (ot)	9-6-3
+ 11/11	vs. Montclair St.	L, 1-0	9-7-3

Home games in bold

\* Empire 8 Conference game;

# Nazareth Tournament

^ Empire 8 Tournament

+ NCAA Tournament at Elizabethtown

## 2006 STATISTICS

NAME	GP-GS	G	A	PTS.	SHOTS	YC-RC	GWG	PK-ATT
Rosanne Simiele	19-19	7	7	21	46	1-0	3	0-0
Rachel Cushman	18-17	7	1	15	46	0-0	1	0-0
Kelly Finn	16-5	5	1	11	16	0-0	1	0-0
Julie Birbilis	19-19	1	5	7	34	0-0	0	0-0
Jessemyn Russell	18-18	3	0	6	17	0-0	0	0-0
Caroline Parsons	17-10	2	1	5	15	0-0	0	0-0
Sandi Toth	18-1	2	1	5	7	0-0	1	0-0
Taryn Bilodeau	19-4	1	1	3	16	0-0	1	0-0
Jessica Rogers	19-19	1	1	3	9	0-0	0	0-0
Caitlin Welch	12-0	1	1	3	6	0-0	0	0-0
Alicia Franceschi	17-0	1	0	2	6	0-0	0	0-0
Kathleen Niland	7-0	1	0	2	3	0-0	0	0-0
Ashley Clinton	19-19	0	1	1	17	1-0	0	0-0
Emily Zurshmit	18-11	0	1	1	6	0-0	0	0-0
Caity Richardson	19-9	0	0	0	9	0-0	0	0-0
Amanda Prosser	19-18	0	0	0	4	0-0	0	0-0
Maggie Boyle	15-10	0	0	0	2	0-0	0	0-0
Carly Schurman	11-5	0	0	0	1	0-0	0	0-0
Kim Yancone	8-6	0	0	0	0	0-0	0	0-0
Laura Finan	2-0	0	0	0	0	0-0	0	0-0
Maggie Dawidczyk	2-0	0	0	0	0	0-0	0	0-0
Alicca Kowalczyk	2-0	0	0	0	0	0-0	0	0-0
NAZ TOTALS	19	32	21	85	260	2-0	7	0-0
Opponents Totals	19	18	11	47	204	5-0	7	2-2
GOALIES	GP/MIN	SAVES	GA	AVG.	PCT.	SHO		
Shannon Burns	19/1672	96	17	0.91	.850	6		
Polly Muehlenkamp	3/92	2	1	0.98	.667	0		
Kiera DeNoyer	2/30	0	0	0	0	0		
NAZ TOTALS	19/1795	86	18	0.90	.845	7		
Opponent Totals	19/1795	169	32	1.60	.771	4		



## NSCAA ALL-AMERICANS

- 2004** – Kristina Cristofori, jr. midfielder (first team)  
**2002** – Heidi Brown, sr. defender (second team)  
**2001** – Jaime Snyder, jr. forward (third team)  
**1999** – Melanie Northrup, sr. midfielder (third team)  
**1997** – Melanie Northrup, so. midfielder (third team)

## NSCAA NORTHEAST REGION ALL-STARS

- 2006** – Rosie Simiele, sr. midfielder (first team); Rachel Cushman, so. forward (second team); Ashley Clinton, so. defender (third team)  
**2005** – Meagan Clark, sr. defender (second team), Kristina Cristofori, sr. midfielder (first team)  
**2004** – Beth Berger, sr. forward (third team), Meagan Clark, jr. defender (second team), Kristina Cristofori, jr. midfielder (first team), Laura Mallia, sr. midfielder (first team)  
**2003** – Beth Berger, jr. forward (third team), Meagan Clark, so. defender (first team), Laura Mallia, jr. midfielder (second team)  
**2002** – Heidi Brown, sr. defender (first team), Stephanie Nardini, sr. midfielder (second team) Jaime Snyder, sr. forward (third team)  
**2001** – Heidi Brown, jr. defender (first team), Casey Corcoran, jr. forward (second team), Stephanie Nardini, jr. midfielder (first team), Jaime Snyder, jr. forward (first team)  
**2000** – Heidi Brown, so. defender (first team), Molly Coddling, sr. defender (first team), Kim French, jr. goalie (first team), Jaime Snyder, so. forward (first team)  
**1999** – Karen French, jr. defender (first team), Melissa Kehoskie, jr. midfielder (first team), Melanie Northrup, sr. midfielder (first team), Michelle Urbanski, sr. forward (first team)  
**1998** – Melissa Kehoskie, so. midfielder (first team) Melanie Northrup, jr. midfielder (first team) Michelle Urbanski, jr. forward (first team)  
**1997** – Erin Jacobs, sr. goalie (first team), Melanie Northrup, so. midfielder (first team), Michelle Urbanski, so. forward (first team)  
**Coach of the Year** – Gail Mann  
**1996** – Rita Bartucca, sr. midfielder (first team), Michelle Urbanski, fr. forward (first team)  
**1995** – Rita Bartucca, jr. midfielder (first team)  
**1987** – Lynne Stever, sr. forward (second team)  
**2006** – Ashley Clinton, so. defender; Rachel Cushman, so. forward; Rosanne Simiele, sr. midfielder

## NYSWCAA ALL-STARS

- 2005** – Meagan Clark, sr. defender; Ashley Clinton, fr. midfielder; Kristina Cristofori, sr. midfielder; Rachel Cushman, fr. forward; Rosanne Simiele, jr. forward  
**2004** – Beth Berger, sr. forward; Meagan Clark, jr. defender; Kristina Cristofori, jr. midfielder (Offensive Player of the Year); Lisa Ksczanowicz, sr. defender; Laura Mallia, sr. midfielder  
**2003** – Beth Berger, jr. forward; Meagan Clark, so. defender; Laura Mallia, jr. midfielder; Erin McConnell, jr. defender  
**2002** – Heidi Brown, sr. defender; Laura Mallia, so. midfielder; Stephanie Nardini, sr. midfielder; Jaime Snyder, sr. forward  
**2001** – Heidi Brown, jr. defender; Casey Corcoran, jr. forward; Kim French, sr. goalie; Stephanie Nardini, jr. midfielder; Jaime Snyder, jr. forward (Offensive Player of the Year)  
**2000** – Heidi Brown, jr. defender; Molly Coddling, sr. defender; Kim French, jr. goalie; Erin Myers, sr. midfielder; Jaime Snyder, so. forward  
**1999** – Molly Coddling, jr. defender; Karen French, jr. defender; Melissa Kehoskie, jr. midfielder; Stephanie Nardini, fr. midfielder; Melanie Northrup, sr. midfielder; Michelle Urbanski, sr. forward  
**1998** – Molly Coddling, so. defender; Melissa Kehoskie, so. midfielder; Melanie Northrup, jr. midfielder; Michelle Urbanski, jr. forward  
**1997** – Erin Jacobs, sr. goalie; Melissa Kehoskie, fr. midfielder; Melanie Northrup, so. midfielder; Shannon Sisson, sr. defender; Michelle Urbanski, so. forward  
**1996** – Rita Bartucca, sr. midfielder  
**Coach of the Year** – Gail Mann  
**1995** – Rita Bartucca, jr. midfielder



MELANIE NORTHRUP



HEIDI BROWN



KRISTINA CRISTOFORI



STEPHANIE NARDINI



MOLLY CODDLING



LAURA MALLIA

## EMPIRE 8 CONFERENCE ALL-STARS

- 2006** - Julie Birbills, jr. midfielder (honorable mention), Ashley Clinton, so. defender (first team), Rachel Cushman, so. forward (first team) Jessica Rogers, sr. midfielder (second team, Sportswoman of the Year) Rosie Simiele, sr. midfielder (first team)  
**2005** - Meagan Clark, sr. defender (first team); Ashley Clinton, fr. midfielder (second team); Kristina Cristofori, sr. midfielder (first team); Rachel Cushman, fr. forward (second team); Randi Hughes, sr. defender (second team); Jessemyn Russell, jr. midfielder (honorable mention); Rosanne Simiele, jr. forward (first team); Kim Yancone, jr. defender (Sportswoman of the Year)  
**2004** – Beth Berger, sr. forward (first team), Meagan Clark, jr. defender (second team), Kristina Cristofori, sr. midfielder (first team), Lisa Ksczanowicz, sr. defender (first team), Laura Mallia, sr. midfielder (first team), Erin McConnell, sr. defender (honorable mention), Holly Sands, fr. goalie (honorable mention), Erin Zillioux, sr. midfielder (honorable mention)  
**Player of the Year** – Kristina Cristofori, jr. midfielder  
**2003** – Beth Berger, jr. forward (first team), Meagan Clark, so. defender (first team), Candace Hatcher, sr. goalie (second team), Lisa Ksczanowicz, sr. defender (second team), Kristen Lempicki, sr. forward (second team), Laura Mallia, jr. midfielder (first team), Erin McConnell, jr. defender (honorable mention), Erin Zillioux, jr. midfielder (first team)  
**2002** – Heidi Brown, sr. defender (first team), Kala Caster, jr. forward (second team), Casey Corcoran, sr. forward (second team), Laura Mallia, so. midfielder (first team) Stephanie Nardini, sr. midfielder (first team), Jaime Snyder, sr. forward (first team)  
**Player of the Year** – Heidi Brown, sr. defender  
**2001** – Heidi Brown, jr. defender (first team), Casey Corcoran, jr. forward (first team), Kim French, sr. goalie (second team), Lisa Ksczanowicz, so. defender (second team), Sarah McGowen, sr. midfielder (second team), Stephanie Nardini, jr. midfielder (first team), Jaime Snyder, jr. forward (first team)  
**Player of the Year** – Jaime Snyder, jr. forward  
**2000** – Heidi Brown, so. defender (first team), Molly Coddling, sr. defender (first team), Karen French, sr. defender (first team), Kim French, jr. goalie (first team), Erin Myers, sr. midfielder (first team); Stephanie Nardini, so. midfielder (first team); Jaime Snyder, so. forward (first team)  
**1999** – Molly Coddling, jr. defender (first team), Karen French, jr. defender (first team), Melissa Kehoskie, jr. midfielder (first team), Stephanie Nardini, fr. midfielder (first team), Melanie Northrup, sr. midfielder (first team), Jaime Snyder, fr. forward (first team), Michelle Urbanski, sr. forward (first team)  
**Player of the Year** – Michelle Urbanski, sr. forward  
**Rookie of the Year** – Stephanie Nardini, fr. midfielder  
**Co-Coach of the Year** – Gail Mann

# Women's Soccer RECORDS



LYNNE STEVER



ANGELA CONIGLIO

## SCORING RECORDS

**MOST POINTS IN A GAME:** 11 (5 goals, 1 assist),  
Lynne Stever vs. Utica, Oct. 19, 1987

**MOST POINTS IN A SEASON:** 61 (26 goals, 9 assists), Lynne Stever 1984 and 1987

**MOST POINTS IN A CAREER:** 226 (98 goals, 30 assists), Lynne Stever 1983-84, '86-87

**MOST GOALS IN A GAME:**  
5, Lynne Stever vs. Utica, Oct. 1987

**MOST GOALS IN A SEASON:**  
27, Lynne Stever, 1983

**MOST GOALS IN A CAREER:**  
98, Lynne Stever, 1983-84, '86-87

**MOST ASSISTS IN A GAME:**  
4, Michelle Urbanski at Brockport, Sept. 9, 1999;  
4, Jaime Snyder vs. Hartwick, Oct. 20, 2001

**MOST ASSISTS IN A SEASON:**  
15, Jaime Snyder, 2000

**MOST ASSISTS IN A CAREER:**  
46, Jaime Snyder, 1999-02



BREE PERRY



RITA BARTUCCA



MELISSA KEHOSKIE



MICHELLE URBANSKI

## GOALKEEPING

**MOST GAMES PLAYED IN A SEASON:**  
23, Erin Jacobs, 1996

**MOST GAMES PLAYED IN A CAREER:**  
78, Erin Jacobs, 1994-97

**MOST SAVES MADE IN A GAME:**  
30, Kathe Pero vs. Alfred, Sept. 30, 1992

**MOST SAVES MADE IN A SEASON:**  
231, Julie Jordan, 1988

**MOST SAVES MADE IN A CAREER:**  
554, Erin Jacobs, 1994-97

**MOST SHUTOUTS IN A SEASON:**  
13, Erin Jacobs, 1996

**MOST SHUTOUTS IN A CAREER:**  
29, Erin Jacobs, 1994-97

**LOWEST GOALS-AGAINST AVERAGE IN A SEASON:**  
0.43, Kim French, 2000

**LOWEST GOALS-AGAINST AVERAGE IN A CAREER:**  
0.75, Kim French, 2000-01



LIZ O'LEARY



JAIME SNYDER

## TEAM RECORDS

**MOST WINS IN A SEASON:**  
17 in 1999 (17-3);  
17 in 2002 (17-4-1)

**MOST GOALS SCORED IN A GAME:**  
10 vs. Keuka, Sept. 19, 2001; 10 vs. Alfred,  
Oct. 18, 2002

**MOST GOALS SCORED IN A SEASON:**  
69 in 1997

**LONGEST WINNING STREAK:**  
12 games in 1986 and 1996

**LONGEST UNBEATEN STREAK:**  
18 games (16-0-2) in 1997

**MOST SHUTOUTS IN A SEASON:**  
13 in 1996

**FEWEST GOALS ALLOWED IN A SEASON:**  
11 in 2000



POLLY POWESKA



ERIN JACOBS



KIM FRENCH



BETH BERGER

CAREER POINTS	GP	G	A	Pts.
LYNNE STEVER (1983-84, 1986-87)	75	98	30	226
MICHELLE URBANSKI (1996-99)	79	49	27	125
JAIME SNYDER (1999-02)	76	37	46	120
ANGELA CONIGLIO (1984-87)	77	42	31	115
BREE PERRY (1995-98)	79	29	17	75
BETH BERGER (2001-04)	78	33	8	74
MELISSA KEHOSKIE (1997-99, 2001)	76	25	22	72
RITA BARTUCCA (1995-96)	41	27	16	70
STACEY ALTEMARI (1989-92)	66	29	9	67
POLLY POWESKA (1994-97)	79	25	12	62

## CAREER GOALS SCORED

LYNNE STEVER (1983-84, '86-87)	98
MICHELLE URBANSKI (1996-99)	49
ANGELA CONIGLIO (1984-87)	42
JAIME SNYDER (1999-02)	37
BETH BERGER (2001-04)	33
STACEY ALTEMARI (1989-92)	29
BREE PERRY (1995-98)	29
RITA BARTUCCA (1995-96)	27
POLLY POWESKA (1994-97)	25
MELISSA KEHOSKIE (1997-99, 2001)	25

## CAREER ASSISTS

JAIME SNYDER (1999-02)	46
ANGELA CONIGLIO (1984-87)	31
LYNNE STEVER (1984-85, '86-87)	30
MICHELLE URBANSKI (1996-99)	27
MELISSA KEHOSKIE (1997-99, 2001)	22
LIZ O'LEARY (1983-86)	21
KRISTEN LEMPICKI (2000-03)	18
BREE PERRY (1995-98)	17
BRIDGET BRILBECK (1984-87)	17
RITA BARTUCCA (1995-96)	16

## ALL-TIME ROSTER

## Women's Soccer



ERIN McCONNELL



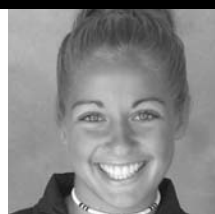
LISA KSCZANOWICZ



KRISTI VICK



KATHE PERO



CASEY CORCORAN



CANDACE HATCHER

Altamari, Stacey	1989, 1990, 1991, 1992	DiMeno, Alicia	1984, 1985	Labrecque, Catherine	1983	Rene, S	1998, 1999, 2000, 2001, 2002
Amidon, Kari	1995	DiSalvo, Gina	1983	LaClair, Becky	1992, 1993	Reohr, Michelle	1987
Arnold, Robin	1994, 1996, 1997	Early, Melissa	2005	LaMagna, Danni	1995, 1996	Richardson, Caity	2004, 2005, 2006
Atchinson, Jenna	2001, 2002, 2003, 2004	Farquhar, Kelly	1989, 1990	Lamb, Tifanie	1999, 2000	Rivoli, Jean	1987, 1988
Ayers, Courtney	1999	Ferguson, Kathryn	2002	Lambiase, Maya	1997, 1998, 1999, 2000	Rogers, Jessica	2003, 2004, 2005, 2006
Barklund, Greta	1992, 1993	Finan, Laura	2006	Lamoureux, Christine	1994	Rogers, Mary Ann	1984, 1985
Barrow, Judy	1984, 1985, 1986, 1987	Finn, Kelly	2005, 2006	Lempicki, Kristen	2000, 2001, 2002, 2003	Rohde, Jackie	1995
Bartucca, Rita	1995, 1996	Fisher, Christine	2001, 2003	Lessord, Terri	1990, 1991	Root, Kara	1995, 1996, 1997, 1998
Basile, Jennifer	1995	Flamik, Tammie	1983	Lindsay, Karen	1986, 1987	Russell, Jessemyn	2003, 2004, 2005, 2006
Beckley, Sonja	1991	Forsyth, Patricia	1984, 1985	Long, Michelle	1989	Sands, Holly	2004, 2005
Beerens, Sarah	1996	Franceschi, Alicia	2006	Lynch, Wendi	1990, 1991	Santino, Renee	1986
Bell, Deidre	2001	Franczak, Jen	1993	Malagisi, Kristina	1996	Schaefer, Jennifer	1988
Bell, Sherri	1989, 1990, 1991	French, Karen	1999, 2000	Mallia, Laura	2002, 2003, 2004	Schmeer, Pam	1984
Berger, Beth	2001, 2002, 2003, 2004	French, Kim	2000, 2001	Manetta, Jenna	1994, 1996	Schmitt, Gretchen	1990
Berkes, Kari	1983	French, Michelle	1996, 1997, 1998, 1999	Mann, Mickey	1984, 1985, 1986, 1987	Schurman, Carly	2005, 2006
Bickett, Jessica	2000	Gale, Jeanne	1994, 1995, 1996	Marangi, Briana	1996, 1997, 1998	Semit, Rhiannon	1998
Bilodeau, Taryn	2005, 2006	Gallagher, Cathy	1998, 1999, 2000, 2001	Marquart, Lisa	1991	Sharpe, Ali	2004
Birbilis, Julie	2004, 2005, 2006	Gonzales, Katie	1998, 1999, 2000	Martini, Liz	1994	Simandle, Suzanne	1991, 1993
Black, Jean	1983	Grant, Erica	1992, 1993	Maxey, Susan	1983	Simiele, Rosanne	2003, 2004, 2005, 2006
Boyle, Maggie	2005, 2006	Graziano, Darrah	2002, 2003	May, Erin	1999	Singer, Susan	1986, 1987
Brennan, Keelin	2003	Gregoire, Jackie	1987	McConnell, Erin	2001, 2002, 2003, 2004	Sirianni, Lynda	1986
Brilbeck, Bridget	1984, 1985, 1986, 1987	Hanscom, Mary	1984	McEvoy, Gale	1983	Sisson, Shannon	1994, 1995, 1996, 1997
Brown, Heidi	1998, 1999, 2000, 2001, 2002	Harrower, Susan	1985, 1986, 1987	McGowen, Sarah	1998, 1999, 2000, 2001	Smith, Donna	1983
Brown, Jill	1984	Hashem, Elizabeth	1983	McGrath, Allison	1992	Smith, Joan	1986
Browning, Amanda	2004, 2005	Haskins, Emily	1998, 1999, 2000	Mertz, Sandy	1984, 1985	Smith, Madonna	1983
Buckley, Jamie	1993	Hatcher, Candace	2000, 2001, 2002, 2003	Miller, Aimee	1992	Snell, Margaret	1990
Burkett, Amy	1993	Hatcher, Cassandra	2000	Miller, Patty	1984, 1985	Snyder, Jaime	1999, 2000, 2001, 2002
Burns, Shannon	2004, 2005, 2006	Hayden, Colleen	1987, 1988, 1989, 1990	Morgan, Cheryl	1996, 1997, 1998, 1999	Solan, Kathy	1988
Campbell, Kieran	2001, 2002, 2003	Heaviside, Amanda	1998, 1999	Morley, Becky	1991, 1992	Sterzelbach, Debbie	1986
Cannan, Maureen	1983, 1984	Hedden, Jeanne	1986	Muehlenkamp, Polly	2006	Stever, Barbara	1986
Cardot, Jessica	2002	Heise, Jill	1988, 1989, 1990	Myers, Erin	1997, 1998, 1999, 2000	Stever, Lynne	1983, 1984, 1986, 1987
Carvill, Heather	1997	Helmer, Hollie	1992, 1993	Nardini, Stephanie	1999, 2000, 2001, 2002	Stolp, Nikki	1990, 1991, 1992
Caster, Kala	2002, 2003	Henion, Arianne	2001, 2002	Newell, Jeanne	1985, 1986, 1987, 1988	Sullivan, Kappa	1998, 2000
Clark, Meagan	2002, 2003, 2004, 2005	Herzog, Margaret	1998, 1999	Nibbelink, Brady	2005	Sullivan, Margaret	1985
Clifford, Nora	1988	Hicks, Leann	1989, 1990	Nicholls, Mary	1983	Tait, Kathy	1984
Clinton, Ashley	2005, 2006	Hinchey, Andrea	1985	Niland, Kathleen	2006	Thayer, Ashley	2002, 2003, 2004, 2005
Codding, Molly	1997, 1998, 1999, 2000	Hogle, Erin	1986, 1988	Norcross, Lauri	1991	Thompson, Betsy	1992, 1993, 1994
Collins, Amie	1999, 2000, 2001, 2002	Holliday, Kimberly	1985	Northrup, Melanie	1996, 1997, 1998, 1999	Thorpe, Karen	1989, 1991, 1992
Colosi, Bridget	1988, 1989	Holt, Shelley	1991	O'Leary, Liz	1983, 1984, 1985, 1986	Tieu, Tran	1995
Compton, Torrie	1989	Hopkinson, Joanne	1984	Ostrander, Amanda	2004	Toth, Sandi	2005, 2006
Coniglio, Angela	1984, 1985, 1986, 1987	Hourigan, Erica	1990	Page, Tammy	1990, 1991	Trainor, Corinne	1983, 1984
Connelly, Laureen	1986	Hughes, Randi	2002, 2003, 2004, 2005	Paige, Allison	2000	Trickey, Jennifer	1987, 1988, 1989, 1990
Cook, Stephanie	1983	Hunter, Kathy	1991	Palermo, Mary	1983, 1984, 1985	Tyson, Jillian	1999, 2000, 2001
Corcoran, Casey	1999, 2000, 2001, 2002	Iles, Kristen	1992	Parsons, Caroline	2004, 2005, 2006	Urbanski, Michelle	1996, 1997, 1998, 1999
Costello, Susan	1988, 1989	Jacobs, Erin	1994, 1995, 1996, 1997	Patterson, Megan	1997	Vainio, Leigh	2001, 2002, 2003, 2004
Cristofori, Kristina	2004, 2005	Jaedicke, Dawn	1984, 1985	Perla, Dana	2003, 2004	Vermilyea, Jessica	1994
Croniser, Tina	1998, 2000	Jankowski, Jocelyn	2005	Pero, Kathe	1990, 1991, 1992, 1993	Vick, Kristi	1993, 1994, 1995, 1996
Curinga, Kathryn	1994, 1995	Jasinski, Jill	1992	Perry, Bree	1995, 1996, 1997, 1998	Wagner, Sarah	1996
Cushman, Rachel	2005, 2006	Jester, Adrienne	1983, 1984	Persico, Catherine	1983	Wahl, Tracy	1991
Davis, Julianna	1997	Jones, Tammy	1989, 1990	Philipson, Diane	1993	Weaver, Tara	1988, 1989
Dawidczyk, Maggie	2006	Jordan, Jennifer	1987, 1988, 1989	Pigula, Michelle	1996, 1997, 1999, 2000	Webster, Jennifer	1994
Deagman, Stephanie	1985, 1986, 1987	Jordan, Julie	1987, 1988, 1989	Pinkerton, Suzanne	1984	Wegman, Jennifer	1988, 1989, 1990
Dearlove, Jenna	1993, 1994	Kapp, Kelly	1993	Polo, Johanna	1988, 1989, 1990, 1991	Welch, Caitlin	2006
DeFilipo, Julie	1988, 1989, 1990, 1991	Kehoskie, Melissa	1997, 1998, 1999, 2001	Popek, Kim	1995	Welge, Lori	1983, 1984
DeFisher, Tracy	1986, 1987, 1989	Kelly, Liz	1995, 1996, 1997	Powell, Juliann	1988, 1989	Welsch, Karen	1985
Delaney, Colleen	1984, 1985	Kemp, Christine	1996	Poweska, Polly	1994, 1995, 1996, 1997	Whitmer, Kelly	1984, 1985, 1986
Delaney, Jennifer	1992, 1993, 1994, 1995	Kent, Carolyn	1994, 1995, 1996	Prosser, Amanda	2003, 2004, 2005, 2006	Winstead, Debra	1985
Dell, Jennifer	1991	Koch, Shelly	1998, 2000	Randazzese, Laura	1985	Witkiewicz, Jamie	2004
DeNoyer, Kiera	2006	Kowalczyk, Alicca	2006	Ranous, Jill	1999, 2000, 2001, 2002	Yancone, Kim	2003, 2004, 2005, 2006
Dietz, Kristen	1992, 1993	Krein, Laurie	1991, 1992, 1993, 1994	Rauber, Jennifer	1991, 1992	Zillioux, Erin	2001, 2002, 2003, 2004
Dilamarter, Holly	1984	Ksczanowicz, L	2000, 2001, 2002, 2003, 2004	Reardon, Ann	1988, 1989	Zurschmit, Emily	2005, 2006



# Women's Soccer

## ALL-TIME SCORES

### 1983 (6-5-2)

**Coach:** Jacklin Randall-Ward

**Captain:** Corinne Trainor

at Brockport	L, 3-0
William Smith B	W, 14-0
Niagara	W, 10-1
at Canisius	W, 3-0
Buffalo State	L, 3-2
Roberts Wesleyan	W, 13-0
at Alfred	L, 3-0
Binghamton	W, 4-1
RIT	T, 0-0 (ot)
at St. Bonaventure	T, 1-1 (ot)
Brockport	L, 6-1
at William Smith	L, 2-1
at Daemen	W, 4-0

### 1984 (14-4-2)

**Coach:** Jacklin Randall-Ward

**Captain:** Corinne Trainor

Houghton	W, 4-1
Penn State	L, 2-1
Brockport	L, 5-2
at Buffalo	W, 4-1
at Niagara	W, 2-0
vs. Westfield State*	W, 1-0
at Rochester*	W, 2-1
Canisius	W, 5-0
at Buffalo State	W, 2-1
Alfred	W, 4-2
at Wells	W, 6-0
at Binghamton	W, 5-1
at RIT	T, 1-1 (ot)
St. Bonaventure	W, 2-1
Hartwick	L, 2-1
at Elmira	W, 5-0
William Smith	W, 4-0
Daemen	W, 6-1
vs. RIT**	L, 1-0
vs. St. Lawrence**	T, 0-0

\*at UR Tournament

\*\*at NYSIAW Tournament at William Smith; St. Lawrence advanced on penalty kicks, 2-1

### 1985 (12-7)

**Coach:** Jacklin Randall-Ward

**Captain:** Liz O'Leary

at Brockport	L, 3-1
Buffalo	W, 3-2
Niagara	W, 4-2
at Houghton	W, 2-1
at Canisius	L, 2-1
Buffalo State	W, 1-0 (ot)
Oswego	W, 3-1
at Alfred	W, 3-2
Wells	W, 4-0
at Roberts Wesleyan	W, 7-0
RIT	W, 1-0
Elmira	W, 9-0
at St. Bonaventure	L, 1-0
Utica	W, 10-0
at William Smith	L, 3-0
at Daemen	W, 9-0
at Hartwick	L, 6-0
vs. Colgate*	L, 3-0
vs. Albany*	L, 4-3

\*at NYSIAW Tournament at Brockport

### 1986 (14-4-1)

**Coach:** Jacklin Randall-Ward

**Captains:** Bridget Brillbeck, Angela Coniglio, Liz O'Leary, Lynne Stever

Allegheny	W, 2-0
at Buffalo	L, 4-0
Brockport	W, 5-1
at Niagara	T, 3-3 (ot)
Houghton	W, 8-0
Canisius	W, 3-1
at Buffalo State	W, 3-1
Roberts Wesleyan	W, 5-0
at Oswego	W, 3-0
Alfred	W, 3-0
at Wells	W, 6-0
at Elmira	W, 4-1
St. Bonaventure	W, 2-0
at RIT	W, 2-0
at Utica	W, 5-0
William Smith	W, 2-1 (ot)
Hartwick	L, 2-1 (ot)
vs. Ithaca*	L, 5-2
vs. Hamilton*	L, 1-0

\*NYSWCAA at Skidmore

### 1987 (10-6-3)

**Coach:** Jacklin Randall-Ward

**Captains:** Judy Barrow, Bridget Brillbeck, Angela Coniglio, Lynne Stever

Buffalo	T, 1-1 (ot)
vs. Potsdam*	W, 3-1
vs. Keuka*	W, 4-1
Niagara	T, 2-2 (ot)
at Houghton	W, 3-0
Buffalo State	T, 1-1 (ot)
at Allegheny	L, 2-1
Oswego	W, 5-1
at Alfred	L, 3-1
Wells	W, 4-0
Elmira	W, 5-0
at Brockport	W, 4-2
at St. Bonaventure	W, 2-1
RIT	W, 1-0
Utica	W, 8-0
at William Smith	L, 8-0
at Cortland	L, 6-1
at Hartwick	L, 6-1
at Roberts Wesleyan	W, 3-1

\*at Binghamton Tournament

### 1988 (5-11-1)

**Coach:** Ron Bartlett

**Captains:** Jeanne Newell, Karen Lindsay

Cortland	L, 5-0
at Buffalo	L, 8-0
Brockport	W, 1-0 (ot)
at Niagara	L, 2-1 (ot)
Buffalo State	L, 3-2
Ithaca	L, 6-0
at Utica	L, 2-0
at Oswego	L, 2-0
Alfred	L, 4-2
at Wells	W, 1-0
at Elmira	W, 1-0
St. Bonaventure	L, 4-3 (ot)
at RIT	L, 1-0
William Smith	L, 3-0
at St. John Fisher	T, 1-1 (ot)
Roberts Wesleyan	W, 4-1
Houghton	W, 2-0

### 1989 (8-8)

**Coach:** Ron Bartlett

**Captain:** Kelly Farquhar

at Cortland	L, 6-0
at Buffalo State	L, 4-1
Brockport	W, 1-0
Niagara	L, 2-1
at Ithaca	L, 3-0
Utica	W, 4-0
Oswego	L, 2-0
at Alfred	L, 2-0
at Wells	W, 4-0
at St. Bonaventure	W, 2-1
RIT	L, 4-3
Keuka	L, 2-1
St. John Fisher	W, 5-0
at Roberts Wesleyan	W, 5-0
at Houghton	W, 3-1

### 1990 (5-9-2)

**Coach:** Ron Bartlett

**Captains:** Kelly Farquhar, Jill Heise

Cortland	L, 4-0
Buffalo State	T, 1-1 (ot)
Brockport	L, 2-0
at Geneseo	L, 4-0
at Niagara	L, 3-0
at Utica	W, 2-0
at Oswego	L, 1-0
Alfred	T, 1-1 (ot)
Wells	W, 5-0
at Elmira	L, 2-0
St. Bonaventure	L, 3-2
at RIT	L, 2-1
at Keuka	L, 1-0
at St. John Fisher	W, 6-4 (ot)
Roberts Wesleyan	W, 3-0
Houghton	W, 3-0

### 1991 (8-8)

**Coach:** Chuck Salamone

**Captains:** Stacey Altemari, Terri Lessord, Tammy Page

at Buffalo State	L, 1-0
Brockport	W, 2-1
vs. Oswego*	L, 2-0
vs. Elmira*	W, 5-0
Utica	W, 3-0
at Cortland	L, 3-0
at Alfred	L, 1-0
at Wells	W, 4-0
at Roberts Wesleyan	L, 5-4
Fredonia	L, 3-2
Elmira	W, 5-0
RIT	W, 5-1
Keuka	L, 1-0
St. John Fisher	W, 2-0
Geneseo	L, 3-0
at Houghton	W, 1-0

\*at Hartwick Tournament

### 1992 (4-12)

**Coach:** Chuck Salamone

**Captains:** Stacey Altemari, Becky Morley, Jennifer Rauber

vs. Oneonta*	L, 3-1
at Fredonia*	L, 5-2
Roberts Wesleyan	W, 3-2
Buffalo State	W, 5-2
at Utica	L, 2-0
at Brockport	L, 4-2
Oswego	L, 5-0
Alfred	L, 2-1 (ot)
Elmira	W, 2-1
at Fredonia	L, 4-0
Wells	W, 7-0
at RIT	L, 2-1
at Keuka	L, 2-0
at St. John Fisher	L, 1-0
at Geneseo	L, 7-0
Houghton	L, 3-2 (ot)

\*at Fredonia Tournament

### 1993 (4-12-1)

**Coach:** Gail Mann

**Captains:** Jenna Dearlove, Sue Simandle

vs. Oneonta*	L, 3-1
vs. Potsdam*	T, 1-1 (ot)
at Roberts Wesleyan	W, 3-1
at Buffalo State	W, 2-0
Utica	L, 5-2
Brockport	L, 2-0
at Oswego	L, 3-0
at Alfred	L, 6-0
at Elmira	L, 2-0
Fredonia	L, 2-1 (ot)
at Wells	W, 2-1 (ot)
Hilbert	W, 5-0
at RIT	L, 3-2
Keuka	L, 4-0
St. John Fisher	L, 4-1
Geneseo	L, 7-0
at Houghton	L, 4-0

\*at Fredonia Tournament

### 1994 (9-8-2)

**Coach:** Gail Mann

**Captains:** Jenna Dearlove, Laurie Krein, Betsy Thompson

vs. Slippery Rock*	W, 7-1
at Fredonia*	T, 1-1 (ot)
Roberts Wesleyan	W, 3-1
at SUNY Utica	W, 7-0
Brockport	L, 2-1
at Utica	W, 2-1
Buffalo State	W, 3-1
Oswego	T, 2-2 (ot)
Alfred	L, 3-2
Elmira	L, 1-0
at Fredonia	L, 2-0
at Hilbert	W, 4-0
at RIT	L, 1-0
at Keuka	W, 3-1 (ot)
at St. John Fisher	W, 2-1
at Geneseo	L, 3-0
Wells	W, 7-0
Houghton	L, 2-1
at Skidmore**	L, 4-0

\*at Fredonia Tournament

\*\*at NYSWCAA Tournament

### 1995 (12-5-1)

**Coach:** Gail Mann

**Captains:** Jen Delaney, Kristi Vick

vs. Slippery Rock*	W, 1-0
at Fredonia*	L, 3-0
at Roberts Wesleyan	W, 7-1
at Brockport	L, 2-0
at Buffalo State	W, 2-1
Utica	W, 7-2
Keuka	W, 3-1
Fredonia	W, 4-2
at Alfred	W, 1-0
at Elmira	L, 3-1
St. John Fisher	W, 4-2
Hilbert	W, by forfeit
RIT	T, 2-2 (ot)
at Oswego	L, 2-0
vs. Lynchburg**	W, 4-0
at Franklin & Marshall	W, 4-1
at Ithaca	L, 3-1
Wells	W, 6-0

\*at Fredonia Tournament

\*\*at Franklin & Marshall

### 1996 (16-6-1)

**Coach:** Gail Mann

**Captains:** Rita Bartucca, Carolyn Kent, Kristi Vick

vs. Mt. Union*	W, 2-0
vs. RIT*	L, 1-0
Roberts Wesleyan	W, 7-0
Hartwick	W, 2-0
Brockport	W, 1-0
Geneseo	W, 2-1
at Utica	W, 5-0
vs. Keuka**	W, 2-1
Alfred	W, 5-2
Elmira	W, 2-0 (ot)
at St. John Fisher	W, 3-0
at Penn State Behrend	W, 2-0
at Methodist, N.C.	W, 2-0
at Greensboro, N.C.	W, 1-0
Oswego	L, 1-0 (ot)
at Vassar	L, 2-1
Ithaca	L, 3-0
at RIT	T, 3-3 (ot)
RIT#	W, 2-0
vs. Alfred#	W, 6-0
vs. Plattsburgh#	L, 2-1
Notre Dame, Md.^	W, 4-0
at Rensselaer^	L, 2-1

\*at Fredonia Tournament

\*\*at Bath High School

#NYSWCAA Tournament

^ECAC Mid-Atlantic Tournament

# Women's Soccer

## ALL-TIME SCORES

### 1997 (16-1-2)

**Coach:** Gail Mann  
**Captain:** Liz Kelly

at Roberts Wesleyan	W, 4-1
vs. Mt. Union*	W, 2-0
vs. RIT*	W, 4-0
at Brockport	W, 3-0
at Geneseo	W, 3-0
Utica	W, 8-0
Keuka	W, 5-1
Binghamton	T, 1-1 (ot)
at Elmira	W, 3-2
St. John Fisher	W, 2-1
Penn State Behrend	W, 5-0
at Oswego	W, 4-0
at Virginia Wesleyan	W, 7-0
at Randolph-Macon	W, 2-1 (ot)
Vassar	W, 4-1
at Ithaca	T, 1-1 (ot)
RIT	W, 6-0
Oneonta**	W, 3-2 (3 ot)
vs. Rochester#	L, 3-2

\*at Fredonia Tournament

\*\*NCAA Tournament

#NCAA Tournament at William Smith

### 1998 (15-4)

**Coach:** Gail Mann  
**Captain:** Bree Perry

at Roberts Wesleyan	W, 5-1
vs. Gettysburg*	W, 1-0
at Elizabethtown, Pa.	W, 4-3
Elmira	W, 5-1
Brockport	W, 3-0
Geneseo	W, 2-0
at Cortland	L, 3-1
at Keuka	W, 4-0
St. Lawrence	W, 5-1
Rochester	W, 2-1
at St. John Fisher	W, 1-0 (ot)
at Utica	W, 6-0
Oswego	W, 3-0
at Vassar	W, 4-2
at William Smith	L, 5-1
Ithaca	L, 3-0
at RIT	W, 2-0
at Hartwick	W, 2-0
Rochester**	L, 1-0 (3ot)

\*at Elizabethtown

\*\*NCAA Tournament

### 1999 (17-3)

**Coach:** Gail Mann  
**Captains:** Melanie Northrup, Michelle Urbanski

vs. William Smith#	L, 2-1
vs. Gettysburg#	W, 3-1
at Brockport	W, 5-0
at Elmira*	W, 3-0
at Geneseo	W, 5-0
Cortland	W, 2-0
Keuka	W, 4-1
at St. Lawrence	W, 4-2
at Rochester	W, 2-1 (ot)
St. John Fisher*	W, 4-0
Utica*	W, 3-0
at UC-San Diego	L, 2-0
at Point Loma	W, 5-2
Vassar	W, 4-0
at Ithaca*	W, 2-1
Hartwick*	W, 3-0
RIT*	W, 5-1
vs. Oneonta**	W, 1-0 (2 ot)
at William Smith**	W, 2-0
Williams^	L, 2-0

\*Empire 8 Conference game

#at Elizabethtown, Pa

\*\*NCAA Tournament at William Smith

^NCAA Quarterfinal

### 2000 (13-3-3)

**Coach:** Gail Mann  
**Captains:** Molly Coddling, Karen French, Erin Myers

vs. Ohio Northern#	T, 1-1 (ot)
vs. Wilmington#	W, 2-1
Brockport	T, 0-0 (ot)
Elmira*	W, 3-0
Geneseo	W, 4-0
at Cortland	W, 4-0
at Keuka	W, 7-2
St. Lawrence	W, 2-0
Rochester	L, 1-0
at St. John Fisher*	W, 2-0
at Utica*	W, 9-0
at William Smith	L, 1-0
at Union	T, 1-1 (ot)
Alfred*	W, 6-0
Ithaca*	W, 1-0
RIT*	W, 2-1
at Hartwick*	W, 5-0
Penn State Behrend^	W, 7-1
at William Smith^	L, 2-1

\*Empire 8 Conference game

#at Rhodes College, Memphis

^NCAA Tournament

### 2001 (12-5-1)

**Coach:** Gail Mann  
**Captains:** Heidi Brown, Cathy Gallagher, Jaime Snyder

vs. Denison#	W, 1-0
at Ohio Wesleyan	W, 2-1
at Brockport	L, 2-0
at Elmira*	W, 5-1
Cortland	W, 3-2
Keuka	W, 10-0
at St. Lawrence	T, 2-2 (ot)
at Rochester	L, 2-1
St. John Fisher*	W, 4-1
Utica*	W, 9-0
William Smith	L, 2-1
Union	L, 3-1
at Alfred*	W, 3-0
at Ithaca*	W, 1-0 (ot)
RIT*	W, 3-1
Hartwick	W, 8-1
Rochester**	W, 2-1
at Union^	L, 3-2

\*Empire 8 Conference game

#at Ohio Wesleyan

\*\*NCAA Tournament

^NCAA Tournament at William Smith

### 2002 (17-4-1)

**Coach:** Gail Mann  
**Captains:** Heidi Brown, Stephanie Nardini, Jaime Snyder

at Methodist, N.C.	W, 3-0
vs. Salisbury, Md.#	W, 2-1 (ot)
vs. Simmons+	W, 2-1
at Wellesley+	W, 2-1 (ot)
Brockport	W, 4-0
at Cortland	W, 3-0
at Geneseo	T, 2-2 (ot)
St. Lawrence	W, 2-0
Elmira*	W, 9-1
at St. John Fisher*	W, 3-0
at Utica*	W, 2-0
at RIT*	W, 8-1
Ithaca*	L, 2-0
at William Smith	L, 4-1
Alfred*	W, 10-0
at Hartwick*	W, 3-2
Rochester	L, 1-0
at Union	W, 1-0
vs. Elmira**	W, 5-0
at Ithaca**	W, 1-0 (pk)
Grove City^	W, 3-2
at William Smith^	L, 2-1 (pk)

\*Empire 8 Conference game

#at Methodist, N.C.

+at Wellesley, Mass. Tournament

\*\*Empire 8 Tournament at Ithaca

^NCAA Tournament

### 2003 (11-5-4)

**Coach:** Gail Mann  
**Captains:** Kristen Lempicki, Erin McConnell

Denison	W, 2-1 (ot)
Ohio Wesleyan	L, 2-1 (ot)
vs. Mary Washington#	T, 1-1 (ot)
vs. Lynchburg#	L, 1-0
at Brockport	T, 0-0 (ot)
Geneseo	W, 3-1
at St. Lawrence	W, 6-2
at Elmira*	W, 3-0
St. John Fisher*	W, 3-0
Utica*	W, 3-0
RIT*	W, 4-1
at Ithaca*	W, 3-1
William Smith	L, 2-0
at Alfred*	W, 4-1
at Rochester	T, 1-1 (ot)
Hartwick*	W, 3-0
Union	L, 1-0
RIT**	W, 5-1
Ithaca**	T, 0-0 (ot)
Rochester^	L, 4-0

\*Empire 8 Conference game

#at Messiah, PA

\*\*E8 Tournament (Ithaca advanced to NAAs on penalty kicks, 4-3)

^ECAC Mid-Atlantic Tournament at William Smith

### 2004 (11-5-2)

**Coach:** Gail Mann  
**Captains:** Erin McConnell, Leigh Valnio

at Virginia Wesleyan	L, 2-0
vs. Mary Washington#	L, 2-1
Brockport	W, 2-1
Cortland	W, 1-0
at Geneseo	W, 3-1
Utica*	W, 4-0
at Ithaca*	T, 3-3 (ot)
Alfred*	W, 3-0
St. Lawrence	W, 3-1
at St. John Fisher*	W, 1-0
Hartwick*	W, 5-2
at William Smith	L, 2-0
Rochester	L, 2-1
at Elmira*	W, 3-0
at RIT*	W, 2-0
at Union	L, 5-0
Elmira**	W, 6-0
at Ithaca**	T, 2-2 (ot)

\*Empire 8 Conference game

#at Virginia Wesleyan

\*\*E8 Tournament (Ithaca advanced to NAAs on penalty kicks, 9-8)

### 2005 (13-6-2)

**Coach:** Gail Mann  
**Captains:** Kristina Cristofori, Kim Yancone

at Denison	L, 2-1 (ot)
vs. Ohio Wesleyan#	W, 2-1
at Brockport	W, 5-2
at Skidmore	L, 2-1 (ot)
Geneseo	W, 3-2
at Hartwick*	W, 4-0
at Cortland	L, 3-0
Elmira*	W, 3-0
RIT*	W, 3-0
at St. Lawrence	W, 2-1
at Alfred*	W, 7-0
at Utica*	W, 2-0
William Smith	L, 1-0
at Rochester	L, 1-0
Ithaca*	T, 1-1 (ot)
St. John Fisher*	W, 3-0
Union	L, 4-2
St. John Fisher**	W, 4-3
Ithaca**	T, 0-0 (ot)
Fredonia^	W, 1-0
Geneseo^	W, 3-1

\*Empire 8 Conference game

#at Denison

\*\*E8 Tournament (Ithaca advanced to NAAs on penalty kicks, 5-4)

^ECAC Upstate Tournament

### 2006 (9-7-3)

**Coach:** Gail Mann  
**Captains:** Shannon Burns, Amanda Prosser, Jessica Rogers, Kim Yancone

Allegheny#	W, 3-0
Wittenberg#	W, 1-0
Brockport	W, 2-1
Skidmore	L, 2-1
at Geneseo	W, 2-0
Utica*	L, 2-0
at Ithaca*	L, 1-0
at St. John Fisher*	W, 3-1
St. Lawrence	L, 2-1 (ot)
at RIT*	T, 2-2 (ot)
Hartwick*	W, 3-0
at William Smith	T, 1-1 (ot)
Rochester	T, 0-0 (ot)
at Elmira*	L, 2-1
Alfred*	W, 8-0
at Union	L, 2-1
at Ithaca**	W, 1-0 (ot)
at Utica**	W, 2-1 (ot)
vs. Montclair State^	L, 1-0

\*Empire 8 Conference game

#Nazareth Tournament

\*\*Empire 8 Tournament

^NCAA Tournament at Elizabethtown



**LEFT | NAZARETH DEFEATED FREDONIA AND GENESEO TO WIN THE ECAC UPSTATE TITLE IN 2005.**

MAIN COLLEGE NUMBER:

(585) 389-2525

ATHLETIC OFFICE FAX:

(585) 389-2839

SPORTS INFO FAX:

(585) 389-2188

PRESS BOX PHONE:

(585) 389-2951

PRESS BOX FAX:

(585) 389-2950

SPORTS HOTLINE:

(585) 389-2095



PHONE *Numbers*



*Campus Expansion:* Nazareth's 2004 campus expansion included 2,200-seat Golden Flyer Stadium, an all-weather track and a softball diamond.

NAZARETH COLLEGE IS A PRIVATE, CO-EDUCATIONAL COLLEGE WITH A LIBERAL ARTS AND SCIENCES TRADITION.

FOUNDED IN 1924 BY THE SISTERS OF ST. JOSEPH, NAZARETH HAS BEEN INDEPENDENT FOR MORE THAN 30 YEARS.

### *Nazareth's athletic mission and philosophy*

The Nazareth College Athletic Department will strive to empower its student-athletes to grow as people and make a positive impact on society, with life-skills development, mentoring, and leadership opportunities through competitive and cooperative experiences.

The Athletic Department is committed to assisting in the college's mission of educating students with a goal of fostering lifelong commitment to intellectual, ethical and aesthetic values. The Athletic Department will operate under firm institutional control of the college and will always place the health and welfare of the student-athletes, coaches and staff first in decisions regarding the athletics program.

The department will operate under the NCAA Division III philosophy, through which academics are the student's first priority and sportsmanship, fair play, diversity and ethical conduct are constantly taught and promoted.

### *Campus expansion*

2004 marked the completion of Nazareth's largest capital campaign in history. The college raised \$25 million to support the recent campus expansion through the purchase of 73 acres of adjoining land and buildings. Today's campus features 148 acres and includes the five-story Golisano Academic Center,

the 2,200-seat Golden Flyer Stadium, the spacious Elizabeth George and Portka residence halls and a softball diamond.

Students now have twice as many classrooms and computer labs; more undergraduate and graduate programs; opportunities to compete on intercollegiate teams in equestrian, cross country, track and field, men's volleyball, and women's softball; and a choice of living options that includes suites, cafes and free laundry service.

### *Faculty*

FULL-TIME	140
PART-TIME	78
STUDENT/FACULTY RATIO	12:1

Ninety-four percent of full-time faculty have received the highest professional degree in their field.

### *Enrollment*

Full-time undergraduate enrollment for the fall of 2007 will be approximately 2,000. That number increases to about 3,200 with the inclusion of part-time and graduate students. There are more than 1,250 students living on campus.

The 2007-08 freshman class had an average SAT score of 1150. One quarter of incoming freshmen finished in the top 10 percent of their high school graduating class; two-thirds ranked in the top 25 percent.

### *Expenses*

2007-08 TUITION	\$21,900
ROOM AND BOARD (various plans available)	\$9,500
FEES	\$1,000
<b>TOTAL</b>	<b>\$32,400</b>

### *Academic highlights*

- During the past 10 years, 22 Nazareth students have won Fulbright grants to carry out research, teach, and study in 13 countries around the world. Few colleges and universities in the nation can match Nazareth's record of preparing students for success in the Fulbright competition—the U.S. government's most prestigious scholarship program.
- Nazareth has a distinguished history of teacher preparation with nearly 1,700 graduates currently teaching in Monroe County classrooms.
- Nazareth features an array of health professions programs, including a Bachelor of Science in Nursing, Music Therapy, Art Therapy, Speech-Language Pathology, and Physical Therapy.
- The Nazareth College Arts Center, which houses the departments of Theatre Arts, Music, and Art, has welcomed more than two million people to performances since it opened in 1967.

### *Community service*

Ninety-one percent of Nazareth undergraduates participate in community service projects while they are students.

In addition, Nazareth offers an on-campus Center for Service Learning, which serves as a resource for students seeking volunteer placements and for faculty who want to incorporate service into the curriculum.

### *Alumni*

Seventy-five percent of Nazareth's 26,000 alumni reside in New York state. Nearly 70 percent are employed in service professions including education, health care, child care, social work, and counseling.

### *Athletic highlights*

- The average grade-point average of student-athletes for the spring 2006 semester was 3.20, a number that includes academic records for more than 400 student-athletes.
- A member of the National Collegiate Athletic Association, Nazareth has 23 intercollegiate teams that compete at the Division III level. Nazareth competes in the Empire 8 Conference with Alfred, Elmira, Hartwick, Ithaca, RIT, St. John Fisher, Stevens Institute of Technology, and Utica.
- Nazareth finished 63rd among more than 300 colleges in the NACDA (National Association of Collegiate Directors of Athletics) standings for Division III in 2006-07. The Golden Flyers were represented in NCAA Tournaments in men's soccer, women's soccer, women's volleyball, women's swimming and diving, men's lacrosse and women's lacrosse. Nazareth also claimed Empire 8 Conference titles in men's soccer, women's soccer, women's volleyball, men's lacrosse and women's lacrosse.

### *Admission*

Contact the Nazareth Admissions Office at (585) 389-2860 or toll-free at (800) 462-3944 to find out more about the admission process, including financial aid opportunities, to attend an open house, or to arrange for a campus tour.



